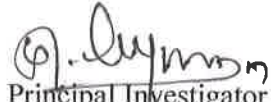

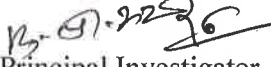


S.No	Title	Journal name/Seminar	Volume, Issue No	ISSN/ISBN No& Page No	Author
1.	Puthinangalil Panmuga Aalumai	Senthamizh Aayvu Kovai	Volume I December 2014	978-81-925010-4-8 P.No.498 to 505	Dr.M.Hemalatha
2.	Puthinangalil Ulaviyal Koorukal	Tamil Ilakkiyankalil Kalanthorum Paduporul Mattrankal	Volume II December 2014	978-93-80800-36-3 P.No. 952 to 956	Dr.M.Hemalatha

  
Principal Investigator  
(Dr.M.Hemalatha)

  
Principal  
**VELLALAR COLLEGE FOR WOMEN  
(AUTONOMOUS),  
THINDAL, ERODE -12.**

S.No	Title	Journal name/Seminar	Volume, Issue No	ISSN/ISBN No& Page No	Author
1.	Tholkappiyar Koorum Magalir Vazhviyal	CHEMPULAM (An International Tamil Research Quarterly Journal)	Issue No.11 August 2015	ISSN 2320-589X. P.no.71 to 73	Dr.N.M.Kavitha
2.	Silappathikarathil Murugan	Tamil Ilakkiyankalil Kalanthorum Murugan	Volume I Decemb er 2014	978-93-84607-05-0 P.No.89 to 93	Dr.N.M.Kavitha
3.	Velliveethiar Padal Kathaikalil Uvamaikal	Kathaikathaiya m Karanamam	Volume V July 2015	978-81-930633-0-09 P.No.474 to 478	Dr.N.M.Kavitha

  
 Principal Investigator  
 (Dr.N.M.Kavitha)

  
 Principal  
**VELLALAR COLLEGE FOR WOMEN**  
**(AUTONOMOUS),**  
**THINDAL, ERODE -12.**

Principal Investigator:

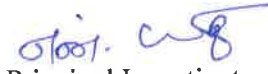
Dr. M. Ayyammal,  
Dept. of Tamil

### Publication Details


1. தமிழ் இலக்கியங்களில் சமயநெறிகளும் திருக்கோயில் வழிபாடுகளும் என்னும் தலைப்பில் தமிழ்த்துறை வேளாளர் மகளிர் கல்லூரி (தன்னாட்சி) ஈரோடு (08.12.2015) அன்று நடத்திய பன்னாட்டுக் கருத்தரங்கில் முனைவர்.மு.அய்யம்மாள் திருமந்திர அட்டாங்க யோகத்தில் நியமம் (ISBN:978-81-920471-9-5) என்ற தலைப்பில் ஆய்வுக் கட்டுரை சமர்ப்பித்துள்ளேன்.
2. தமிழ் இலக்கியங்களில் வாழ்வியல் சிந்தனைகள் என்னும் தலைப்பில் தமிழ்த்துறை ஸ்ரீ வாசவி கல்லூரி ஈரோடு, தமிழ் மரபு அறக்கட்டளை சார்பாக (04.01.2017) அன்று நடத்திய பன்னாட்டுக் கருத்தரங்கில் முனைவர்.மு.அய்யம்மாள் திருமந்திர அட்டாங்க யோகத்தில் பிராணாயாமம் (ISBN:978-93-85517-32-7) என்ற தலைப்பில் ஆய்வுக் கட்டுரை சமர்ப்பித்துள்ளேன்.

## Paper Presentation Details

S.No	Title	Journal name/Seminar	Volume, Issue No	ISSN/ISBN No& Page No	Author
1.	Thirunangaikalin Samookam	Jamal Academic Research Journal : An Interdisciplinary	Special Issue, Vol.9 No.1(2) December 2016	ISSN 0973-0303 P.No.66 to 68	Dr.N.Gomathi
2.	Thirunangaikalin Sadangukalum Nanbikkaikalum	Tamil Ilakkiyankalil Valviyal Sinthanaikal	Volume I January 2017	ISBN .978-93-85517-32-7  P.no.354 to 359	Dr.N.Gomathi

  
Principal Investigator  
(Dr.N.Gomathi)

**N. GOMATHI, M.A.,M.Phil.,**  
UGC-MRP: Principal Investigator  
Assistant Professor  
Department of Tamil  
Vellalar College for Women (Autonomous)  
Thindal, ERODE - 638 012.

  
PRINCIPAL,  
VELLALAR COLLEGE FOR WOMEN,  
(AUTONOMOUS)  
THINDAL (PO) ERODE - 12.

Principal Investigator: Mrs. A. Vanitha  
Dept. of English

**APPENDIX - A**

**UNIVERSITY GRANTS COMMISSION  
SOUTH EASTERN REGIONAL OFFICE, HYDERABAD  
MINOR RESEARCH PROJECT 2014 - 2016**

(UGC Letter No. F MRP - 4944/14 (SERO/UGC) Dated March 2014)

**DETAILS OF PUBLICATIONS**

1. *Native Canadian Culture: Shamanic Symbols in Marie Annharte Baker's "Being on the Moon"*. COJELL: International Refereed Quarterly Journal of English Language and Literature Oct. 2016. pp. 70-74. ISSN. 2349-1124. Print.
2. *Reclaiming the Past: Narrative Strategies in Magic Realist Fiction*. PLUMES: International Refereed Creative Journal of English Language and Literature Oct. 2016. <http://hogobooks.com/plumes/2015/oct/article.html/> ISSN: 2349-1825. Online.

## PLUMES

*An Internationally Refereed Quarterly Creative Journal of English Language & Literature*

JAN 2016

### **Negritude and Women characters in Gloria Naylor's *Women of Brewster Place***

Ms. K. Kokila

Ph.D. Research Scholar

PG & Research Department of English

Vellalar College for Women, Erode

Dr. D. Bhagyathara

Associate Professor & Head

PG & Research Department of English

Vellalar College for Women, Erode

Gloria Naylor is one of the well known women African American novelists. Her first novel came out in 1982 under the title *Women of Brewster Place*. The novel depicts the dilapidated society and the desolate women of a small community that struggles to survive in a fictitious place. Naylor presents a bleak and degrading community of people through which she depicts the struggle and suffering that African American people in general and African American women in particular undergo in the United States of America. Through the various women voices, she paints the desolate picture of their lives. The paper aims at understanding how Naylor associates her women characters and their sufferings to the consciousness of Negritude and its effect on their lives.

The novel is told in seven stories of which six belong to individual women and the final story is about the community in general. All the six women are residence of a rundown community called the Brewster Place. The fictitious Brewster Place is a housing development that had gone wrong. However, it had survived the ages and as the story is told, it is occupied by African Americans who migrate to the place from the south after the civil war era.

Mattie Michael is the first of the six women who narrates her life story. Mattie lives a typical life of an African American woman: pregnancy out of wedlock, single mother, and women caretaker. She is filled with the conscience of negritude throughout the story. She forms the part of the great migration to the north from the south. She lives in poor condition and works hard for her living. She gives priority to her motherhood and relocates herself for the sake of her son's better life. She sacrifices everything she own for her son and becomes lonely after her son departs. Yet, Mattie is a strong woman who overcomes her grief and disappointment in life and begins to live for other women like her who suffer in the hands of their men. Mattie has done nothing wrong except being African American and therefore living within the circle of the community with the conscience of being a black person.

Etta Johnson is another African American woman who suffers not only in the hands of the white but in the hands of her own men. She is also another woman who goes in search of a stable married life. When Etta loses her hope of setting down when she is disappointed by Woods, Mattie helps her to come out of her desolation. Kiswana is another woman of the Brewster Place who bears the conscience of negritude as a yolk round her

neck. She voluntarily comes to Brewster Place to help the community but she is taunted by her mother and reminded her of her lineage. Kiswana's consciousness of being a black woman gets expression when she angrily calls her mother 'White man's nigger'.

Ciel is another woman character in the novel who like other women wishes to have a stable married life. She tolerates the abuse which she receives in the hands of her husband. She is conscious of her blackness and as a result does not stand up and fight Eugene. She is distraught when her only child dies of electrocution. She is also consoled by Mattie who appears to be an anchor that holds the lives of several women. Cora Lee is another woman character in the Brewster Place who is fond of being a mother. She gives birth too many children but fails to care for them. Kiswana's help makes her realize her mistake but she goes back to her old ways helplessly. The consciousness of being black and the lack of security and opportunity push black women of the story to hold on to their families with or without men in them. They are desperate to make a family where they believe there is security but African American men of the story desert their women and the women are left to fend for their family as single mothers. The very scenario is caused due to racial discrimination.

Lorraine's life is full of suffering and abuse in the hands of men. She is considered as an outsider in the community because of her sexual orientation. She befriends Ben, another men character that abuse their women and allow white men to abuse them as well. The consciousness of being black plays a significant role in the lives of these men as well as these women. The very outlook of life exhibited by these people is the direct result of the constant reminder that lurks in their minds. Men abusing women is also caused by such constant nagging. Women many a times become insensitive to the abuse and passively accept their fate. The numbness and indifference towards such injustice and oppression is caused due to the conscience of negritude that doggedly presses them down towards dissolution and despair.

Naylor's *Women of Brewster Place* vividly paints the dismal and desolate life stories of African American women which in turn is a representation of a major social condition that prevails in the United States of America especially in the increased cases of single mothers and unwed mothers.

It is negritude that has pushed these women towards such a despondent habitat which is considered by them as promising but disappoints them as it crumbles around them as they try to build it. Their color and their family conditions drive them towards Brewster Place i.e. towards destruction and hopelessness. The men of the novel escape from responsibilities and the women struggle to pick up their lives after men leave. However, the women of the Brewster Place exhibit positive attitude towards life. Even though they are driven to the end of the world because of their blackness as well as their men, they come together and help one another in building their lives. The novel paints a positive story amidst a negative setting. It portrays a group of women who are strong and compassionate. Who help one another to withstand the barrage of misfortunes that fall on them.

#### Bibliography

1. Awkward, Micheal. "Authorial Dreams of Wholeness: (Dis) Unity, (Literary) Parentage, and The Women of Brewster Place". 37 – 70. Print.
2. Buchanan, Ian. *Oxford Dictionary of Critical Theory*. Oxford; Oxford University Press, 2010. Print.
3. Fowler, Virginia C. *Gloria Naylor: In Search of Sanctuary*. New York: Twayne, 1996. Print.
4. Montgomery, Maxine L. "The Fathomless Dream: Gloria Naylor's Use of the Descent Motif in The Women of Brewster Place". *CLA Journal*. 36 (1), 1992: 1-11. Print.
5. Naylor, Gloria. *The Women of Brewster Place*. New York: Viking, 1982. Print.

# A Post Modernistic Reading of Gloria Naylor's *Mama Day*

1

**Ms. K. Kokila**

Ph.D. Research Scholar  
PG & Research Department of English  
Vellalar College for Women, Erode

**Dr. D. Bhagyathara**

Associate Professor & Head  
PG & Research Department of English  
Vellalar College for Women, Erode

Like life, literature has also been dynamic in the process of self reflection. Through the ages it has criticized itself, ridiculed itself and in due course reformed itself for better or worse. Philosophy has played a very significant role in bringing out such reforms. It has made a comprehensive contribution to the shaping of writers and their writings as they are today. One such philosophy that heavily influenced the later part of the twentieth century is Post Modernism. It has radicalized the very foundation on which writers worked. Many a twentieth century writer, captivated by this all-encompassing approach, has embraced it in order to define their expressions. Gloria Naylor, an African American Novelist, is one such writer who eagerly drew from the facets of Post Modernism. *Women of Brewster Place*, *Men of Brewster Place*, *Bailey's Café*, and *Mama Day* are few of her novels which are appreciated for their

literary quality. *Mama Day* is one of her major works which is a romance where rational and the irrational have a conflict on an imaginary land. This paper aims at giving a reading of this novel from a Post Modernistic perception which will definitely throw light on Naylor's dexterity as a writer and her success in employing Post Modernistic tools to meeting her objectives.

The term postmodernism has been employed to refer to a host of movements, mainly in art, music, and literature that reacted against tendencies in modernism, and are typically marked by revival of historical elements and techniques. ('Post Modernism') it can be said that the very essence of Post Modernism is to resist any kind of classification or definition. However, there are a few commonly found characteristics that are generally identified as Post Modernistic: Post Modernistic works do



not have a neatly cleaned up ending like Modernistic work. In fact they parody such features. Post Modernistic writers approach creation as a chance and not as a craft. There is Metafiction to usurp the control of the author. Ridiculing established conventions found in matters of subject and genre is commonly seen in Post Modernistic works. This often leads towards making the work a Pastiche. Fragmentation is another chief characteristic of Post Modern works similar to that of modernistic works but while Fragmentation presents an obligation to the author under Modernism, Post Modernism renders the author impotent and allows the work to remain a part of the chaos.

Mama Day is a romance which has, in its center, a serious conflict between reason and ritual with love as its background. The story of Mama Day revolves round two characters George and Cocoa. Cocoa is a young southern woman searching for a job in New York. Cocoa has strong ties with her family and ancestry in Willow Spring Island. George is an orphan who is an engineer with his own firm. Cocoa and George meet when he interviews her for a job. Later both get married in spite of Mama Day intervening with her magic. Four years after their marriage, cocoa and George go to Willow Springs and George is mystified by all the supernatural events that happen in the place. He is a highly rational person and he refuses to believe

in the supernatural. Meanwhile George comes to know that Cocoa is in mortal danger which Mama Day opines that it is because of Ruby's Hex. Ruby is believed to have hexed Cocoa out of jealousy. Even though George has great difficulty in believing the occult, he tries to carry out the instructions given by Mama Day in order to save Cocoa for the sake of his love. However, his disbelief leads to carelessness that ends up in tragedy.

Mama Day is a good example for a Post Modernistic work. "Naylor uses Pastiche, Inter textuality, metafiction, and magical realism [...] to picture not only the dominance of racism and gender issues but also the absurdities of the individuals, and the malignity and enticement of the soul." (Karunambagai) the experiment in the Meta Narrative starts with the narrative technique. In Mama Day, the story is unfolded through the conversations that Cocoa has with her husband, George who is dead. And, like in her other novels, an omniscient narrator fills the gaps and adds credibility to the supernatural phenomena that is found in the story. The narration of the novel contains a multitude of narrative voices which include: 1st person plural narration – The Communal voice of the people from Willow Springs. It is also the first one introduced to readers. This voice is best described as an omniscient voice that has been around to see everything. The introduction and sections throughout the book are written

in this voice as the different stories of Bascombe Wade, Sapphira Wade, and what exactly "18 and 23" is. For an example of this communal voice is in this sentence from the introduction that states, "And he coulda listened to them the way you been listening to us right now." Rita Mae Brown states that "The different voices are beautifully realized but confusing to read." (Brown)

Naylor's further experiment happens in the 'Time' element of the plot. Like most other Post Modern and Post Colonial works, the story swings not only from one time frame to another, but it swings from one world of reality to another world of fantasy.

Parody is also seen in *Mama Day*. *Mama Day* contains allusions to Shakespearean plays such as *King Lear* – which is referred to many times by both Cocoa and George, *Hamlet* who houses a female character by the name of Ophelia, and *The Tempest* which includes a female character with the same name as *Mama Day* – Miranda. Like Miranda from the Shakespeare play, *Mama Day* also deals with magic or supernatural powers, and is set on a secluded island. "The storyline in *Mama Day*, like another of Shakespeare's play *Romeo and Juliet*, concerns star-crossed lovers." (Mukherjee) "Naylor's *Mama Day* blends the magic, myth and reality equally to present the authority of

aboriginal African Americans." It is a novel whose subgenres include legend, folklore, mystery, and fantasy.

Gloria Naylor has dexterously and judiciously employed Post Modernistic tools in creating her novel, *Mama Day*. She has used Post Modernistic tools to project a collage of events that depict the capricious and vagarious constitution of human soul. Naylor has presented human life and its tenuous ties to reality and its limitations to distinguish reality from that of fantasy in a creative and captivating style with the background of romance, magic, and rational.

### Works Cited

"Post Modernism." Merriam Webster's Collegiate Dictionary. 2004. Print.

Naylor, Gloria. *Mama Day*. New York: Ticknor & Fields, 1988. Print.

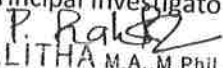
Karunambigai, R. "Characteristics of Postmodernism In The Select Works of Gloria Naylor." *International Journal of English Language, Literature and Humanities*. www.Jkellh.org. Web.

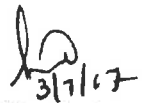
Brown, Rita Mae. "Black Laughter in an Offshore Showoff Novel". *Los Angeles Times*. 1988. Web.

Mukherjee, Bharati. "There Are Four Sides to Everything". *The New York Times*. 1988. [www.nytimes.com](http://www.nytimes.com). Web.

Details of Paper published


S.No.	Title	Name of the Journal	Volume, Issue No.	ISSN & Page No.	Author
1.	A Study of the Consequences of 'SMS' Language on the Standard of English	GASCIAN Journal of Social Science	Vol. 4, NO.2, July-December 2016.	ISSN 2348-0432 (25-26)	P. Lalitha
2.	The Impact of 'SMS' Language on Standard English	IOSR Journal of Humanities And Social Science (IOSR - JHSS)		e-ISSN: 2279-0837, p-ISSN: 2279-0845 pp 50-51	P. Lalitha

Principal Investigator  
  
 P. LALITHA M.A., M.Phil., (Eng). M A (His)  
 UGC-MRP: Principal Investigator  
 Vellalar College for women (Autonomous)  
 Thindal, Erode-12.

  
 3/1/17  
 Principal  
**PRINCIPAL**  
**VELLALAR COLLEGE FOR WOMEN**  
**(AUTONOMOUS)**  
 ERODE - 12.

### Details of Papers Published

S.No.	Title	Name of the Journal	Volume, Issue No.	ISSN&Page No.	Author
1	Teaching the Listening skill of English to the Tribal Children of Erode District	Gascian journal of social science	4,2	2348-0432 (23-24)	Dr.P.Selvi
2	Teaching the Speaking Skill to the Tribal Children of Erode District	IOSR Journal of Humanity And Social Science	Special Issue based on "National Conference on Translation Studies"	2279-0837 (52-54)	Dr.P.Selvi



Principal Investigator

**Dr.P.SELVI** M.A.,M.Phil ,Ph.D  
UGC-MRP:Principal Investigator  
Vellalar College for women (Autonomous)  
Vindal, Erode-12.



Principal  
PRINCIPAL  
VELLALAR COLLEGE FOR WOMEN  
(AUTONOMOUS)  
ERODE - 12.

Principal Investigator : Dr. S. Janaki  
Dept. of English.

#### PUBLICATION DETAILS

1. Janaki S and S.Sumathi. An Ecocritical Reading of D.H.Lawrence's *Women in Love*.

*IOSR Journal of Humanities and Social Science*. Vol 22, Issue 3. March 2017. pp 125-

28. e-ISSN : 2279 – 0837, p-ISSN: 2279 – 0845

2. Janaki S and S.Sumathi. An Ecocritical Perspective: Kiran Desai's *The Inheritance of*

*Loss*. *PARIPEX – Indian Journal of Research*. Vol. 6, Issue. 6. June 2017. pp 658 – 59.

ISSN – 2250 - 1991. IF : 5.761.

# ECONOMIC EMPOWERMENT OF RURAL WOMEN THROUGH SELF- HELP GROUPS

\*Dr.S.Jothimani, Assistant Professor in History, Vellalar College for Women, Erode, Tamilnadu, India.

## Abstract

In most of the developing countries today, more and more emphasis is laid on the need for development of women and their active participation in the main stream of development process. It is also widely recognized that apart from managing household, bearing children, rural women bring income with productive activities ranging from traditional work in the fields to working in factories or running small and petty businesses. They have also proven that they can be better entrepreneurs and development managers in any kind of human development activities. Therefore, it is important and utmost necessary to make rural women empowered in taking decisions to enable them to be in the central part of any human development process. The empowerment of women also considered as an active process enabling women to realize their full identity and power in all spheres of life. Through organizing informal self-help groups (SHGs), rural women in India are provided credit and extension support for various production-oriented income generating activities.

## Introduction

At the dawn of the Indian history women possessed a high social status and some of them were widely reputed for their learning. But the social, economic and political changes of later years levered their position and gradually denied them their right to education too. The social code for women, their early marriage and seclusion restricted their life by the end of the eighteenth century. But the Indian renaissance in the following period increasingly touched all aspects and problems of national life, position of women not exempted, till finally under the inspiring leadership of Mahatma Gandhi, it assumed the form of political struggle and social reforms in which women joined freely and shared equally with men the burdens and the honors. Later, the constitution of India provided women equality of status and greater opportunities, so as to give them their earlier pristine glory.

In view of bringing improvements in the socio-economic condition of women, efforts were made to maximize the participation of women in different educational levels, with the notion that education is the most important instrument to bring awareness about their rights, social status, as a prime element to maximize participation in different categories of remunerative employment etc. For this purpose, many awareness programmers were undertaken for women empowerment.

Self Help group intervention is well organized all over the world an affective tool for poverty alleviation and improving socio-economic states of poor and marginalized. In India too, Self Help Group is making head way in its effort for reducing poverty and empowering women. This concept is the brain child Mohamma Yunus of Bangladesh and has brought a revolutionary change in the field of development. Further, this has become an important part of micro finance through the network of NABARD and NGOs has been largely supply driven and a recent approach (Action Aid, 1995). Micro finance other than banks are engaged in the provision of financial services to the poor.

## Objectives of the study

Basically the present study aims to know about the activities of the self-help groups in the empowerment of rural women in Erode district. Specific objectives are:

1. To know about the socio-economic status of women in rural areas
2. To know about the role of the women empowerment through the Self-Help Groups.
3. To find out the real progress and administrative structure of the Self-Help Group in rural areas

4. To know about the knowledge on the Government Schemes for getting help to form Self-Help Groups.

5. To know the role of the co-ordination of Self-Help Groups and Non-Governmental organizations in the rural areas in women empowerment.

### Research Methodology

The primary data collected through the interview schedule is represented in the form of Tables. The tables are analyzed with the percentages, so as to ascertain a comparative study. Secondary information was gathered from Sociological Abstracts, leading regional, national and international journals and books published in the fields such as women studies, women empowerment, women development, women employment, rural women, Self-employment, Self-Help Groups, etc.

### Functioning of Self-Help Groups

SHGs are functioning in democratic manner. The upper limit of members in a group is restricted to 20. Among them a member is selected as an 'animator' and two members are selected as the representatives. The animator is selected for the period of two years. The group members meet every week. They discuss about the group savings, rotation of sangha funds, bank loan, repayment of loan, social and community action programmes. Objectives of the Self-Help Groups are

- To develop women in socially and economically, who live below the poverty line
- To stop treating of women as slaves
- To develop self-confidence among the women
- To bring out the potential in women
- To promote gender equality and equal rights.
- To promote unity among women, learn to work together
- To abolish dowry
- To enhance community harmony
- To promote education and make cent percent literacy for women
- To give importance to the differently abled person and help them

- To follow the small family norms
- To encourage women to take over village level administration.
- To take part in the political processes.
- To voluntarily save from their income and expenditure.
- To take small loans without having to pledge jewels with money lenders or pledge documents in the bank.

### Analysis and Interpretation of the data

The primary data collected through the Interview Schedule is represented in the form of tables. The tables are analyzed with the percentages, so as to ascertain a comparative study. Further, on the basis of collected data certain generalizations were made so as to get findings, suggestions and conclusion. The socio-economic background of the respondents revealed the information on the family background, income, education, etc. The information collected from the respondents on their socio-economic aspects is analyzed, interpreted and discussed as under.

#### 1. Age of the Respondents:

Age determines the urge to work. It is emphasized that the younger have power or energy to work hard; whereas the elders have intelligence based on their rich experience. Hence, information was collected from the respondents on the age groups and presented in the following table as under

Table No. 1

Particulars	No. of Respondents
18 to 25 years	26
26 to 40 years	38
41 to 50 years	21
Above 50 years	15
<b>Total.</b>	<b>100</b>

It is observed from the above table that among the respondents covered under the study. 38% are between the age groups of 26 to 40 years followed by, 26% are between the age group of 18 to 25 years, 21% are between the age group of 41 to 50 years and the remaining 15% of the respondents are of above 50 years of age. It is



analyzed that majority of the respondents in the present study are of young aged women.

## 2. Education

The information education of the respondents helps to assess their knowledge about the management of Self-Help Groups, government policies about the women empowerment, etc. Hence, information was collected from the respondents on the education and presented in the following table.

Table No. 2

Particulars	No. of Respondents
Illiterate	36
Lower / Higher Primary	42
Intermediate	22
<b>Total</b>	<b>100</b>

The levels of education of the respondents made it clear that 42% have completed lower or highest primary education followed by, 36% are illiterate, 22% have completed intermediate. It is emphasized that majority of the respondents are literates, but not highly educated.

## 3. Restriction on social evils due to women empowerment and rural development

Government has formulated welfare policies for women empowerment and rural development, to remove and restrict the social evils like Alcoholism, domestic violence, dowry practice, gender inequality, female illiteracy, etc. As such it was asked to the respondents on whether these evils were restricted or controlled due to the efforts of the government and the collected responses are tabulated as under.

Table No. 3

Particulars	No. of Respondents
Alcoholism	16
Domestic Violence	13
Gender Inequality	18
Female Illiteracy	53
<b>Total</b>	<b>100</b>

It is noted that a few of the respondents have stated that more than one type of social evil was restricted and as such, they were marked on two or three options in interview schedule. Particularly, 16% have stated that there is

restriction on Alcoholism, 13% have expressed that there is restriction on domestic violence, 18% have stated that there is reduction in gender inequality and a great majority that is 53% have agreed that there is increase in female education. Due to women empowerment and rural development, it is emphasized that female education is developed very much in rural areas.

## 4. Occupation of the Respondents

Occupation of the respondents plays an important role in Self-Help Group activities. If the respondents are housewives, then they may concentrate more on Self-Help Group activities. If the respondents are already working in other areas, then they are unable to concentrate on the activities of the Self-Help Groups. Hence, information was collected on the occupation of the respondents and presented in the following table.

Table No. 4

Particulars	No. of Respondents
Agriculture / Horticulture	30
Animal Husbandry	11
Housewife	35
Any Other	24
<b>Total</b>	<b>100</b>

The above table disclosed that 30% of the respondents are working in agriculture or horticulture, 11% are working in animal husbandry, 35% are housewives and the remaining 24% are engaged in other occupations.

## 5. Reasons for joining Self-Help Group

Apart from the motivation to join the Self-Help Groups, there are also many reasons for joining Self-Help Groups by the respondents. These reasons as expressed by the respondents are presented in the following table.

Table No. 5

Particulars	No. of Respondents
Save the Money	18
Get Easy Bank Loan	37
Start Business	45
<b>Total</b>	<b>100</b>

It is observed from the above table that of the total respondents covered under the study, 18% have joined Self-Help Groups to save the money, 37% have joined Self-Help Groups to get bank

loans easily and remaining 45% have joined the Self-Help Groups to start their own business. Starting income generating activities is the main reason for joining the

Self-Help Groups as stated by majority of the respondents followed by the reasons to start business, get bank loans easily and such other reasons.

#### 6. Nature of income generating work

After joining to the Self-Help Groups, the respondents have started income generating activities. The natures of such income generating activities are shown in the following table.

Table No. 6

Particulars	No. of Respondents
Stitching Work / Handicraft	37
Animal Husbandry	23
Petty Business / Trade	40
<b>Total</b>	<b>100</b>

On the nature of income generating work involved by the respondents, 37% are engaged in stitching work and handicraft, 23% are involved in animal husbandry and 40% are involved in petty business or trade.

#### 7. Financial progress after joining into SHG after 5 years

Self-Help Groups are formed for the improvement and progress of economic life and status of rural women. As such, it was asked to the respondents to furnish the information the financial progress of the respondents, after joining to the Self-Help Groups and the progress of five years and the collected information is presented in the following table.

Table No. 7

Particulars	No. of Respondents
Improved and Progressive	83
No Change	17
<b>Total</b>	<b>100</b>

It is emphasized from the above table that due to the participation in the Self-Help Group activities, financial progress of 83% of the respondents is improved and progressive and that of 17% of the respondents is not changed. It is highlighted from the study that the financial status

of a great majority of the respondents is improved and progressive and hence, it can be generalized that the aims of the Self-Help Groups is achieved to a greater extent.

#### 8. Benefits got from SHG other than economic activities

The Self-Help Groups are formed so as to gain economic benefits. Apart from the economic benefits, the respondents have gained from other benefits such as education, religious, political benefits etc. Hence, the information was collected on the benefits gained from Self-Help Groups other than economic benefits and presented in the following table.

Table No. 8

Particulars	No. of Respondents
Social Status and Respect	31
Equality in all Aspects	29
More Freedom & Self Confidence	40
<b>Total</b>	<b>100</b>

It is noted from the above table, the respondents have gained benefits from self-help groups in more than one aspect other than economic activities. Specifically, of all the respondents covered under the study, 31% of the respondents have gained social status and respect, 29% of the respondents have gained equality in all aspects and 40% of the respondents have gained more freedom and self confidence.

#### Findings

- Creating awareness about the government and bank procedures.
- Making women able to read and write
- Taking them to visits outside.
- Developing the capability to manage a mini bank with ledgers and passbooks.
- Enhancing their knowledge and skills to undertake economic activities.
- Motivating them to increase their incomes by undertaking successfully, economic activities as individual or groups.
- Providing good marketing outlets for their products.

- Encouraging their participation in the Gram Sabhas, Panchayat Level Federation Clusters, Block Level Federations, meetings of BLCC and DPCC held under the chairmanship of the District Collector.
- Creating the confidence and courage to address and take up varied issues concerning themselves and the community.

#### Suggestion

The following suggestions may be made from the present study.

1. Even though women are participating in socio-economic activities of the family and society, still they do not have adequate decision making authorities in their own families. Hence, it is suggested to the family members of the respondents to allow them to make the decisions in their families.
2. Bank services should be improved
3. There is need to control the social evils such as domestic violence, alcoholism, gender inequality and female illiteracy in the villages.
4. It is essential to motivate the rural women in starting up of Self-Help Groups, irrespective of their religion and caste, so that there will not be discrimination in the name of caste or religion and equal participation of rural women of all religions and castes.
5. It is suggested to the Self-Help Group members to attend and actively participate in the meetings of Self-Help Groups and discuss on the issues.
6. It is also essential on the part of the family members to provide adequate freedom to the women to spend the profit generated through income generating activities.
7. It is suggested to the Self-Help Group members to invest the profits earned through income generating activities in other productive activities rather than domestic or personal expenses.
8. There is need for the more efforts of the NGOs to train the members of the Self-Help Groups in income generating activities.
9. Efforts to increase female literacy are essentially needed in rural areas.
10. Additional initiatives should be taken to market the Self-Help Group's products.

11. The Self Help Group members can create awareness regarding women empowerment, health and hygiene, female infanticide, water conservation, kitchen gardening and other environmental issues in their respective areas.

#### Conclusion

The development of Indian women will be the biggest source of enrichment for our country's development. Empowering of women presupposes a dynamic and democratic change in the perception and expectation from women in our society. To help women, to attain economic independence is the first priority for such a change. In this regard, the emergence of self-help group to seek economic independence for every woman is a welcome change and given the assistance and guidance these self help group is bound to make not only a sea change in empowering women but also tap the hither to unutilized powers of women for development of the society as a whole.

SHGs started functioning all over Tamilnadu, in some areas they are functioning effectively whereas in some areas they face problems. Since SHGs help women to achieve economic empowerment, this policy measures can contribute a lot to the nation. To conclude, the economic activities of SHGs are quite successful. In this way, SHGs in three areas of Erode district were very successful to develop women empowerment and rural areas.

#### References

- Abhilasha Singh Eesha Sinha., *Women and Self Help Groups*, Axis Books PVT, New Delhi, 2013.
- Amit Shekhar., *Rural Women and Women Empowerment*, Centrum Press, New Delhi, 2014.
- Arjun Y.Pangannavar., *Rural Poverty Eradication Through Women Empowerment in India*, Navyug Books International, Delhi, 2014.
- Bedabrat Saikia & Devojit Phukan., *Empowerment of Women in India*, S.K. Book Agency, New Delhi, 2014.
- Brijesh Kumar., *Womens Self-Help Groups*, Astlia Publishers & Distributors, New Delhi, 2014.
- Dimpal Viji S.K.Mishra., *Micro Fiance and Self Help Groups in India The Way Ahead*, Mangalam Publishers, Delhi, 2013.

- Haresh Kumar B. Chaudhari., *Status of Women in Modern India*, Shree Niwas Publications, Jaipur, 2013.
- Jyoti K. Heggani., *Women Empowerment Through Self-Help Groups*, Currant Publications, Agra, 2014.
- Kailash Chandra Mishra., *Self Help Groups and Rural Development*, Kunal Books, New Delhi, 2014.
- Mani.N., *Micro Finance, Self-Help Groups and Poverty Eradication in India*, New Century Publishers, New Delhi, 2014.
- Padmasree Jalandhar.k *Entrepreneurship and Women Empowerment*, Discovery Publishing House PVT. LTD., New Delhi, 2014.
- Raghurajan Y.K., *Womens Welfare Programmes*, Omega Publications, New Delhi, 2014.
- Shankar Chatterjee., *Rural Development & Self Employment Programmes in India*, RBSA Publications, Jaipur, 2014.
- Suman Kalyan Chaudhury., *Women Empowerment & Entrepreneurship*, S.K. Book Agency, New Delhi, 2014.
- Singh Y.P., *Women Entrepreneurship*, Garima Prakashan, Kanpur, 2014.
- Tanuja Trivedi., *Women Equality and Development*, Jnanada Prakashan, New Delhi, 2013.
- Zahir Hussain.B., *Empowerment of Women Through Self-Help Groups*, Manglam Publications, Delhi, 2013.

—  
\*M  
INT

to th  
usin  
and  
of M  
certa  
role  
cure:  
being  
herb:  
of th  
of me  
Most  
cure  
the h  
Also,  
medic

TRA

conve  
regior  
In mar  
Long  
genera  
2000).

SIGN

(WHO  
firmly  
rapidly  
Traditi  
contin  
2002).

STRU

They a  
came to  
like any  
three tra  
is found  
TamilN

LFS-LI

S.NO.	Title of the Paper	Name of the Journal	Vol.No. & Issue No.	Month & Year	ISSN NO.
1	Women Entrepreneurs	ROOTS – International Journal of Multidisciplinary Researches	Vol.3, Issue:7	Sep., 2016	ISSN: 2349-8684
2	Impact of Demonetization on Women Entrepreneurs	A Journal of Intercontinental Management Research Consortium	Vol.5, Issue-2.	Feb., 2017	ISSN: 2347-1670/ 2347-1662/ 2347-1654
3.	Problems of Women Entrepreneurs	International Conference – Department of commerce (CA), K.S.R College of Arts and Science for Women, Thiruchengode.		8 <sup>th</sup> Sep. 2016	-

Principal Investigator:  
Dr. P. Hemalatha  
Dopt. of Maths

### List of Presentation and Publications

1. Paper entitled  $\widehat{K}_{p,q}$  - Factorizations of Symmetric Digraph of Wreath Product of Graphs has been presented in the National Conference on "Mathematics and Computer Techniques" at PSGR Krishnammal College for Women, Coimbatore, Tamilnadu, during 22-23, March, 2016 and won second prize for best paper award.
2. Paper entitled *Evenly Partite Directed Bigraph Factorization of Product Graphs* has been accepted for presentation at the UGC sponsored National Conference on "Recent Trends in the Applications of Mathematical Sciences" at Vellalar College for Women, Erode, to be held during 08-09, September 2016.
3. Paper entitled *Gregarious Star factorization of Tensor Product of Graphs* has been submitted for publication in the Journal **Discrete Mathematics, Algorithms and Applications**

The papers to be published in the conference proceedings and in the journals will be sent to UGC- SERO as an outcome of this project.

## ENCLOSURE-1

### Details of Presentations in Conferences/Seminars

S.No.	Date	Name of the Conference	Title of the paper presented	Conducted by
1	22.12.2016 to 23.12.2016	National Level Conference on Current Senario in Pure and Applied Mathematics	Existence of solution of Nonlinear Anti-periodic Boundary Value Problem of fractional Order using Adomian Decomposition Method	PG & Research Department of Mathematics, Kongunadu Arts & Science College, Coimbatore.
2	07.12.2017 to 08.12.2017	International Conference on Advances in Applicable Mathematics	Existence of positive solution of Anti-periodic Boundary value problem of Fractional Nonlinear Differential Equations	Department of Mathematics, Bharathiar University, Coimbatore

The papers to be published in the journals will be sent to UGC-SERO as an outcome of this project.

*S. Pad*

**PRINCIPAL INVESTIGATOR**

**S. PADMAVATHI**  
**PRINCIPAL INVESTIGATOR UGC - MRP**  
Assistant Professor  
Department of Mathematics,  
Vellalar College for Women (Autonomous)  
Erode - 638 102, Tamilnadu.

ENCLOSURE-1

PUBLICATION DETAILS

- R.Parvathi, G.Thamizhendhi, "Some Results on Domination number in Products of Intuitionistic Fuzzy Graphs" Annals of Fuzzy Mathematics and Informatics Volume 9, No. 3, (March 2015) pp 403-419.
- G.Thamizhendhi, R.Parvathi, Equitable, restrained and k-domination in intuitionistic fuzzy graphs, Global Journal of Pure and Applied Mathematics, Volume 12, Number 1, 2015, pp. 125-145.
- G.Thamizhendhi, R.Parvathi, Intuitionistic Fuzzy Tree Center-Based Clustering Algorithm, International Journal of Soft Computing and Engineering, Volume-6 Issue 1, 2016 pp. 50-65.

*G. Tham*

SIGNATURE OF THE  
PRINCIPAL INVESTIGATOR

**Mrs.G.THAMIZHENDHI, M.Sc., M.Phil., PGDCA.**  
**UGC MRP Principal Investigator**

*he*

**PRINCIPAL**  
**PRINCIPAL**  
**VELLALAR COLLEGE FOR WOMEN**  
**(AUTONOMOUS)**  
**ERODE - 12.**



## LIST OF PUBLICATIONS

The results/observations of this study have been brought out in the following publications/communications:

1. R.Parvathi, K.K.Myithili and M.Akram *Certain types of intuitionistic fuzzy directed hypergraph*, International Journal of Machine Learning and Cybernetics, 7(2), DOI 10.1007/s13042-014-0253-1, 2014, pp.287-295.
2. R.Parvathi and K.K.Myithili, *Transversals of intuitionistic fuzzy directed hypergraph*, Notes on intuitionistic fuzzy sets, 21 (3), 2015, 66-79.
3. R.Parvathi and K.K.Myithili, *Properties of Transversals of intuitionistic fuzzy directed hypergraph*, Advances in Fuzzy Sets and Systems, <http://dx.doi.org/10.17654/FS021010093>, 21(1), 2016, 93-105.

Principal Investigator : Ms. L. Usha  
Dept. of physics.


**PUBLICATION DETAILS**


- Usha L., Haresh M. Pandya., "Role of Soil Electrical Conductivity (EC) and pH in the Suitability Prognosis of Agricultural Practices in Noyyal River Basin" **SciExplore: International Journal of Research in Science**, Vol 2(1), 6-12, January-June 2015, *ISSN (Print):2349-8919; ISSN (Online):2350-0999*
- Usha L., Haresh M. Pandya., "Electrical Conductivity as Pedotransfer Function: Field Scale Modeling" **Transactions on Engineering and Sciences (TES)** (*A Quarterly Peer-reviewed and Refereed International Journal*) *ISSN (Print):2347-1875; ISSN (Online):2347-1964* Global Impact Factor: 0.57, Volume 5, Issue 1, January – March 2017.
- Usha L., Haresh M. Pandya., "Electrical Conductivity as pedotransfer function in the determination of Sodium Adsorption Ratio in soil system in managing micro level farming practices in India: An effective low cost technology" in **World Academy of Science, Engineering and Technology (WASET), International Journal of Agricultural and Biosystems Engineering** Vol:4, No.6, 2017.
- Usha L., Haresh M. Pandya., "Electrical Conductivity (EC) as a Pedotransfer Function for Predicting Soil Sodium Adsorption Ratio (SAR)" **Journal of Environmental Nanotechnology** (*A Quarterly Peer-reviewed and Refereed International Journal*) *ISSN(Print):2279-0748; ISSN(Online):2319-5541CODEN:JENOE2*. In Print

**Details of publication in Journal/Articles/Books/Presentation of Seminars in the  
Minor research project entitled “Testing the Competent Technique for Decontamination of  
Textile Effluents Using Electrochemical Degradation and Activated Carbon”.**

**F.No: MRP-4940/14 (UGC-SERO)**

- Published a paper entitled “A study on efficient dyeing and preparation of activated carbon from peels of citrus fruits for adsorption studies” in the proceedings of UGC funded National Conference on ‘Innovative Approaches in Biological Sciences towards Sustainable Development’, organized by PG & Research Department of Botany, Vellalar College for Women (Autonomous), Erode during 23.7.2014 to 24.7.2014.
- Presented a paper entitled “Electrochemical Degradation of Reactive yellow 44 Dye with Novel Active Charcoal on Pb/PbO<sub>2</sub> Electrode” in the DST sponsored National Conference on ‘Advanced Materials and their applications’ (NCAMA -2016) held on 21.01.2016 organized by PG & Research Department of Chemistry, V.O.Chidambaram College, Tuticorin.
- Presented a paper entitled “Degradation of Reactive Red 2 Dye with Novel Nanosize Active Charcoal” in the Inter National Conference on ‘Frontier Areas in Chemical Technologies -2016 (FACTs – 2016) organized by the Departments of Industrial Chemistry, Nanoscience & Technology and Bioelectronics & Biosensor, Alagappa University, Karaikudi during 21<sup>st</sup> March to 23<sup>rd</sup> March, 2016.

  
PRINCIPAL  
VELLALAR COLLEGE FOR WOMEN  
(AUTONOMOUS)  
ERODE - 12.

  
Principal Investigator  
**Dr. V. Sreeja M.Sc., M.Phil., Ph.D.,**  
**UGC - MRP : Principal Investigator**

Principal Investigator : Dr. S.K. Kawitha  
Dept. of Chemistry

### PUBLICATIONS

1. A paper entitled '**Degradation of commercial textile dyes using UV/single semiconductor and UV/coupled semiconductor systems**' has been presented at the UGC sponsored national Seminar on Recent Advances in Chemistry held at Kandaswami Kandari's College, Velur 638182, Tamilnadu and published in the proceedings.
2. A paper entitled "**Heterogeneous Photocatalytic Treatment of Textile Effluent Using Semiconductor Oxide Under UV Irradiation**" has been accepted for publication in the international journal SciExplore Vol.2(2) 2015.

Principal Investigator: Dr. J. Indira  
Dept. of Chemistry.

Publications out of this Project

- [1] **J. Indira** Starch Mediated Synthesis of Hydroxyapatite Nanoparticle for Biomedical Applications, *Kong. Res. J.* 2(1): 15-17, 2015, ISSN 2349-2694, Kongunadu Arts and Science College, Coimbatore.
- [2] **J. Indira** "Synthesis and characterization of bioceramic/triterpenoid porous nanocomposite for biomedical applications" in the proceedings of the international Conference on Nanomaterials and Nanotechnology (NANO-15) held at K.S. Rangasamy College of Technology, Tiruchengode, India during 7-10<sup>th</sup> December 2015. Book Name ; Bio-Nanomaterials for Biomedical Technology, Editors: V.Rajendran, P. Prabu, K. E. Geckeler, **Publisher: Bloomsbury Publishing India Pvt. Ltd, New Delhi-110070, ISBN: 978-93-85436-92-5, pp. 95-98 (2015).**

Principal Investigator:

Dr. N. Anjanadevi

List of Publications / Presentations

Dept. of Botany

### Publications

1. N. Anjanadevi. 2015. Survey of sporadic medicinal plants in Kanjamalai, Salem District, *IOSR Journal of Humanities and Social Sciences*, ISSN-e 2279-0837, ISSN-p-2279-0845, July, 2015, PP-92-94.
2. N. Anjanadevi. 2016. Phytochemicals and GC-MS profiling in the bulb of *Scilla indica* Baker. *Journal of Global Biosciences*, ISSN-2320-1355, 5(3):3769-3775.

### Presentations

1. N. Anjanadevi, Paper entitled 'Screening *Chomelia asiatica* O.Kze for secondary metabolites' Presented in the **National seminar on Recent Advances and Challenges in Plant Science** conducted on 6.3.2015 organised by the Department of Botany, Arulmigu PalaniAndavar Arts and Science College for Women, Palani, Tamilnadu.
2. N. Anjanadevi. Paper entitled 'Survey of sporadic medicinal plants in Kanjamalai, Salem District', Presented in the **International Conference on Innovations in Research in the field of Social Science**, conducted on 21.7.2015, organised by the Department of Management, Sri Vasavi College, Erode, Tamilnadu.

Principal Investigator: Dr. G. Jayanthi  
Dept. of Botany

List of Research Manuscript published during -MRP.4952\14  
(UGC-SERO)

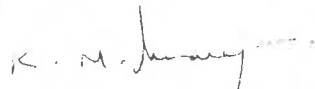
S.No.	Title of Paper	Authors
1.	GC-MS Analysis of <i>Premna latifolia</i> Roxb. var. <i>mollissima</i> (Roth) C.B. Clarke.	Kavya A. and Jayanthi G.
2.	Anatomical studies of <i>Premna latifolia</i> Roxb. var. <i>mollissima</i>	Kavya A. and Jayanthi G.
3.	Preliminary Scientific appraisal of the potential medicinal plant <i>Premna latifolia</i> Roxb. var. <i>mollissima</i>	Kavya A. and Jayanthi G.

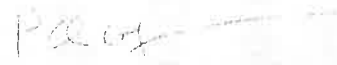


on  
**Medicinal Plants and Herbal Drugs in Human and Livestock Wealth**  
**A Global Prospective, 29<sup>th</sup>-31<sup>st</sup>, January 2016**  
**P.G. & Research Department of Botany (1940-2015, Platinum Jubilee)**  
**Pachaiyappa's College (1831-2015, 174th Year)**  
**Chennai - 600 030, INDIA**

Certified that Prof. /Dr. /Mr. /Ms. S. Sharmila of Dept of Botany  
Sellalar College for women, Erode. has participated and presented a ~~lead~~ / oral / poster on  
Preliminary Phytochemical analysis and HPLC analysis..... Acacia caesia (L.) Willd.  
 at the ISMPHD-2015

  
 Dr. L. SEKAR  
 Organising Secretary

  
 Dr. K. M. UMARAJAN  
 Convener

  
 Dr. P. GAJIVARADHAN  
 Chairman

Organised by



Post Graduate & Research Department of Botany  
 Pachaiyappa's College, Chennai



Society for Conservation and Resource Development  
 of Medicinal Plants (SMP), New Delhi

Conservation and Resource Development  
 of Medicinal Plants

Sponsored by





### Details of Paper Published

S. No.	Title	Name of the Journal	Page No.	Authors
1.	Antioxident Activity of <i>Pisonia grandis</i> (R.Br.) Stem Extracts	Proceedings of UGC Sponsored national Conference on Innovative Approaches in Biological Sciences Towards Sustainable Development Organised by PG & Research Department of Botany, Vellalar College for Women (Autonomous) Erode, Tamil Nadu.	76 -80	C. Chitra Vadivu , N. Anusuya and S. Manian
2.	Hepatoprotective Activity of <i>Pisonia grandis</i> R.Br. Against CCL <sub>4</sub> Induced Rats	The Animalia ( <i>International Journal of Zoology</i> ) Published by Department of Zoology, Periyar University, Salem, Tamil Nadu.	2(2017) 18 - 23	C. Chitra Vadivu , M. Viji, A.Maruthupandian and K. Thenmozhi

*c. chitra*

**Dr. C.CHITRA VADIVU**  
PRINCIPAL INVESTIGATOR  
UGC - MINOR RESEARCH PROJECT

*h2*

**PRINCIPAL,**  
**VELLALAR COLLEGE FOR WOMEN,**  
**(AUTONOMOUS)**  
**THINDAL (PO) ERODE - 12.**

From

D.Indumathi,  
Principal Investigator – MRP – 4939/14 (UGC-SERO),  
Assistant Professor of Zoology,  
Vellalar College for Women,  
Erode.

To

Dr.G.Srinivas,  
Joint Secretary,  
UGC – SERO,  
Hyderabad – 500 001.

Through

The Principal,  
Vellalar College for Women,  
Erode.

Respected Sir,

Sub: Submitting the details of publications of papers in Journal/ books/ presentation in Seminars from the Minor Research Project – reg.

Ref: F.N.MRP 4939/14 (UGC-SERO) August, 2016.

With reference to your letter cited above, I would like to inform you that I have presented a paper entitled “Compost preparation from kitchen waste using effective microorganisms” in the International Symposium on “Bioscience Research for Present and Future” organized by Vivekanandha College of Arts and Sciences for Women, Tiruchengode, on 14.12.2015 from my Minor Research Project entitled “Microbial conversion of vegetable waste to biofertilizer”. Herewith I have enclosed a copy of the certificate issued by the authorities for your notice.

Thanking you,

Yours Sincerely,



D.INDUMATHI

forwarded  
20/9/16

Place: Erode

Date: 20.09.2016

PRINCIPAL,  
VELLALAR COLLEGE FOR WOMEN,  
(AUTONOMOUS)  
THINDAL (PO) ERODE - 12.

DESPATCHED



# VIVEKANANDHA

## COLLEGE OF ARTS AND SCIENCES FOR WOMEN



(Autonomous)

An ISO 9001 : 2008 Certified Institution

(Affiliated to Periyar University, Approved by AICTE & Re-Accredited with 'A' Grade, by NAAC,

Recognized under section 2(f) and 12(B) of UGC Act, 1956)

Elayampalayam - 637 205, Tiruchengode (Tk.), Namakkal (Dt.), Tamilnadu, India.

### INTERNATIONAL SYMPOSIUM ON BIOSCIENCE RESEARCH FOR PRESENT AND FUTURE BIOMILENNIUM'15

Sponsored by : ANGAMMAL EDUCATIONAL TRUST



CERTIFICATE

This is to certify that Mr. / Ms. / Dr. **D.INDHUMATHI**, Assistant **Professor**, Department of **Zoology** of **Vellalar College for Women, Grade**..... has participated / presented a poster / paper under the title **Effective micro organisms**..... in the International Symposium on " **BIOSCIENCE RESEARCH FOR PRESENT AND FUTURE** " organized under the auspices of the Department of Bioscience held on 14<sup>th</sup> December 2015.

  
Organized Secretary

  
PRINCIPAL

  
Prof. Dr. M. KARUNANITHI  
Chairman & Secretary

**Details of Paper published**

S.No.	Title	Name of the Journal	Volume, Issue No.	ISSN & Page No.	Author
1.	Comparative study on the feeding activity of <i>Bombyx mori</i> with host plant <i>Morus nigra</i> (Mulberry) and Alternative plant <i>Ricinus communis</i> (Castor Plant)	International Organization of Scientific Research	9, 12	2319-2372 (29-33)	M.Muthunagai
2.	Assessment of Growth rate of Silk worm <i>Bombyx mori</i> with two different host plants <i>Ricinus communis</i> and <i>Morus nigra</i>	Souvenir of International symposium on Bioscience Research for present and future Pg. No. 46 (Biomillennium' 15) Organised by Department of Biosciences, Vivekanandha College of Arts and Sciences for Women, Nammakkal			M.Muthunagai

*M. Muthunagai*  
Principal Investigator

M. MUTHUNAGAI M.Sc., M.Phil.,  
B.P., Principal Investigator  
Professor and Head  
Department of Zoology  
Vellaia College for Women  
Erode - 638 012

*M. Muthunagai*  
25/1/17

**PRINCIPAL**  
Principal  
**VELLALAR COLLEGE FOR WOMEN,**  
**(AUTONOMOUS)**  
**THINDAL (PO) ERODE - 12.**

APPENDIX - A


UNIVERSITY GRANTS COMMISSION  
SOUTH EASTERN REGIONAL OFFICE, HYDERABAD  
MINOR RESEARCH PROJECT 2014-2016  
(UGC letter No. F MRP-4948/14 (SERO/UGC) Comcode:TNB015, dated March 2014)

**"Pre and Pro Biotic Intervention Package for Better Gut Health to Improve Immunopotency Among Adolescent Girls and Expectant Mothers"**

**LIST OF PROJECT PAPERS PRESENTED IN THE SEMINARS & CONFERENCES**

1. Paper Entitled "Need For Nutritional, Clinical, Marketing And Legal Awareness Among The Consumers Towards Probiotic Foods In Indian Scenario" -International Conference On "Emerging Strategies For Green Marketing In Consumer Cooperatives" Vellalar College For Women, Erode on 09.09.2015
2. Paper Entitled "Pre And Probiotic Dietary Package For Better Gut health And Immunopotency Of The Adolescent Girls In Erode Town", DBT Sponsored National Conference On RTCFSB 2015, Kongu Engineering College, Erode On 25.09.2015
3. Paper Entitled "Regulation Of Indian Home Made Curd Preparation To Enrich With Gut Beneficial Probiotics" International Symposium On Bioscience Research For Present And Future, Vivekananda College Of Arts & Science For Women, Tiruchengode On 14.12.2015
4. Paper Entitled "Pre And Probiotic Dietary Formulations To Improve Immunologically Beneficial Gut Microbiome In Erode Town", International Symposium On Bioscience Research For Present And Future, Vivekananda College Of Arts & Science For Women, Tiruchengode On 14.12.2015
5. Paper Entitled "Probiotics Supplementation For The Immunological Betterment Of The Pregnant Mothers In Erode Town" 2nd International Seminar On Biosciences-Elixir Of Life (BSEL-2016) ,Sri Ganesh College Of Arts And Science, Salem on 05.02.2016
6. Paper Entitled "Effect Of Probiotics Dietary Supplementation On The Weight And Body Mass Index Of The Selected Pregnant Mothers" 2nd International Seminar On Biosciences-Elixir Of Life (BSEL-2016) ,Sri Ganesh College Of Arts And Science, Salem on 05.02.2016
- ✓ 7. Paper Entitled "Cost Effective Pre And Probiotic Health Package To Improve Beneficial Gut Microbiome Of Adolescent Girls In Erode Town" -National Conference On "Perspectives And Prospects In Aquatic Research Kongunadu Arts And Science College, Coimbatore On 16.02.2016 ( To be published in National Journal of Food Science during July - Dec. 2016 issue)
8. Paper Entitled "Probiotic Potential Home Made Curd Recipe In Intestinal Health Of Selected Community In Erode Town" -National Conference On "Perspectives And Prospects In Aquatic Research" Kongunadu Arts And Science College, Coimbatore On 16.02.2016

  
PRINCIPAL,  
VELLALAR COLLEGE FOR WOMEN  
(AUTONOMOUS),  
ERODE-638 012

  
DR. N. MARAGATHAM  
PI-UGC-XI PLAN-MRP 2014-18  
ASSOCIATE PROFESSOR IN BIOCHEMISTRY  
DEPARTMENT OF NUTRITION & DIETETICS  
VELLALAR COLLEGE FOR WOMEN  
ERODE - 638 012




Principal Investigator :


Dr. E.S. Samundeeswari,  
Dept. of Computer  
Science

### PUBLICATION DETAILS

- [1] Samundeeswari E.S., Saranya P.K., "A MultiScale Approach to Despeckle ultrasound Image", *International Journal of Computer Applications (0975 – 8887) National Conference on Research Issues in Image Analysis and Mining Intelligence (NCRIAMI-2015)*, ISSN : 0975 – 8887, 2015 (2):19-23, June 2015.
- [2] Samundeeswari E.S., Saranya P.K., "Computational Techniques in Breast Cancer Diagnosis and Prognosis: A Review", *International Journal of Advanced Research*, ISSN 2320-5407, Volume 3, Issue 11, 770 – 775, 2015.
- [3] Samundeeswari E.S., Saranya P.K., "M2 Filter For Speckle Noise Suppression In Breast Ultrasound Images", *ICTACT- Journal On Image And Video Processing*, ISSN: 0976-9102(ONLINE), Volume: 06, Issue: 02, November 2015.
- [4] Nivetha. S., Samundeeswari E.S., "Predicting Survival Of Breast Cancer Patients Using Fuzzy Rule Based System", *International Research Journal of Engineering and Technology (IRJET)*, Volume 2, Issue 8, Nov-2015.
- [5] Samundeeswari E.S., Saranya P.K., "An Artificial Neural Network Model for Prediction of Survival Time of Breast Cancer Dataset", *International Journal of Research in Engineering and Applied Sciences*, Vol. 6, Issue 1, 2016.
- [6] Samundeeswari, E. S., Sathya. C., "Statistical Measures And Genetic Algorithm for Gene Selection in Breast Cancer", *International Journal of Innovative Research in Science, Engineering and Technology*, Vol. 5, Issue 3, March 2016.
- [7] Saranya P. K., Samundeeswari, E. S., "A Study on Morphological and Textural Features for Classifying Breast Lesion in Ultrasound Images", *International Journal of Innovative Research in Science, Engineering and Technology*, Vol. 5, Issue 3, March 2016.
- [8] Samundeeswari E.S., Saranya P.K., Manavalan R., "Segmentation of Breast Ultrasound Image Using Regularized K-Means (ReKM) Clustering", *2016 International Conference on Wireless Communications, Signal Processing and Networking (WiSPNET)*, IEEE Digital Xplore, 2016. In print.

S.No	Title	Journal name/Seminar	Volume, Issue No	ISSN/ISBN No& Page No	Author
1.	A Survey on Consumer Awareness Towards Eco - Friendly products in poonndurai Town , Erode District	Indo Global Journal of Commerce And Economics (Quarterly International Journal)	Issue No.1 Volume 2 March 2015	ISSN 2393-9796 P.no.189 to 193	Dr.V.Renugadevi
2.	Going Green By Indian Corporates	Paper Presented in International Conference on "Emerging Strategies for Green Marketing in Consumer Cooperatives" held at Vellalar College for Women, Erode on 9 <sup>th</sup> September 2015			Dr.V.Renugadevi

  
Principal Investigator  
(Dr. V. Renugadevi)

  
Principal  
**VELLALAR COLLEGE FOR WOMEN**  
**(AUTONOMOUS),**  
**THINDAL, ERODE -12.**



**From**

Dr.S.Kalaiselvi  
Associate Professor & Head  
Department of Commerce with Computer Applications  
Vellalar College for Women (Autonomous)  
Thindal, Erode-638012, Tamil Nadu.

**To**

Dr.G.Srinivas  
Joint Secretary  
University Grants Commission  
South Eastern Regional Office  
APSFC Building, 4<sup>th</sup> Floor,5-9-194  
Chirag-Ali-Lane, Hyderabad-500 001

**Through**

The Principal  
Vellalar College for Women (Autonomous)  
Thindal, Erode -638012, Tamil Nadu.

Respected ~~Member~~ Sir,

**Sub:** Submission of publication details -Reg.

**Ref:** Your letter File No. MRP-4942/14 (SERO/UGC) COMCODE: TNBA015,  
dated: August, 2016.

\*\*\*\*\*

I would like to express my sincere gratitude for having sanctioned the Minor Research Project entitled "A study on government initiatives for continuing education of school drop outs with special reference to Erode district". I wish to bring to your kind notice that, I am herewith submitting the publication details for your kind perusal.

**International Journals:**

1. Government Initiatives for continuing Education of school dropouts- A Snapshot, EPRA International Journal of Economic and Business Review, Vol.3, issue 10, October 2015,pp 197-204. Impact factor: 4.618. ISSN: 2349-0187.
2. Government Initiatives and effectiveness of implementation: An empirical investigation in Erode District, PEZZOTTAITE Journals, Vol. 4,Number 4, October-December 2015,pp 1956-1966. Impact factor: 5.912.ISSN: 2319-9059.

I request you to kindly release the balance grant of Rs.17,500 at an early date.

Thanking You

Place: Erode  
Date: 18-08-2016

Your's faithfully,

*S. K. L. Kalaiselvi*

(Dr.S.Kalaiselvi)

Encl: As stated above

**DR. S. KALAISELVI, M.com., MBA., M.Phil., Ph.D., PGDCA., CGA.,  
UGC - MRP: PRINCIPAL  
INVESTIGATOR**


*18/8/16*  
**PRINCIPAL,  
VELLALAR COLLEGE FOR WOMEN,  
(AUTONOMOUS)  
THINDAL (PO) ERODE - 12.**

**Details of Paper Published**

S.No.	Title	Name of the Journal	Volume, Issue No.	ISSN & Page No.	Author
1	A Study on Electrical Energy Conservation Practiced in Shop Floor Management of Select Oil Mills in Kangayam, Tirupur District, Tamilnadu"	International Journal of Multidisciplinary Research and Modern Education (IJMRME)	Volume II Issue II 2016	2454- 6119	Dr.S.Devaki
2	Energy Conservation – The Indian Perceptives	International Journal of Interdisciplinary Research in Arts and Humanities (IJIRAH)	Volume I Issue I 2016	2456-3145	Dr.S.Devaki

Signature of

  
Principal Investigator

  
**PRINCIPAL**  
Principal  
**VELLALAR COLLEGE FOR WOMEN,**  
**(AUTONOMOUS)**  
**THINDAL (PO) ERODE - 12.**

**UNIVERSITY GRANTS COMMISSION**  
**BAHADUR SHAH ZAFAR MARG**  
**NEW DELHI – 110 002**

**F. No. : 43 - 418/2014 (SR), dated Sep 2015**

**Name of the Principal Investigator: Dr .R. Parvathi**

Associate Professor & Head  
 Department of Mathematics  
 Vellalar College for Women (Autonomous)  
 Erode – 638 012, Tamilnadu.

**Details of Publications**

S. No.	Title of the paper	Author(s)	Journal name	Year, Vol.(Issue), Page No.
1	Intuitionistic fuzzy random variable	R. Parvathi and C. Radhika	Notes on Intuitionistic Fuzzy Sets (indexed in Directory of Research Journals Indexing (since 2016), EZB (Electronic Journals Library) (since 2016), Index Copernicus (in 2012, for 2015 under evaluation), ROAD – Directory of Open Access Scholarly Resources (since 2015), WorldCat / OCLC (since 2016) and Zentralblatt MATH (since 1995)	2015, 21(1), 69 – 80
2	Intuitionistic fuzzification functions	C. Radhika and R. Parvathi	Global Journal of Pure and Applied Mathematics (indexed in the Mathematical Reviews, MathSciNet, Zentralblatt MATH and EBSCO Databases, ICI, Index Copernicus)	2016, 12(2), 1211 – 1227
3	Defuzzification of intuitionistic fuzzy sets	C. Radhika and R. Parvathi	Notes on Intuitionistic Fuzzy Sets (indexed in Directory of Research Journals Indexing (since 2016), EZB (Electronic Journals Library) (since 2016), Index Copernicus (in 2012, for 2015 under evaluation), ROAD – Directory of Open Access Scholarly Resources (since 2015), WorldCat / OCLC (since 2016) and Zentralblatt MATH (since 1995)	2016, 22(5), 19 – 26

4	Noise removal from images using intuitionistic fuzzy logic controller	C. Radhika, R. Parvathi and N. Karthikeyani Visalakshi	Annals of Fuzzy Mathematics and Informatics (indexed in MatheScinet and Korea Citation Index, and UGC approved journal)	2017,13(3), 421 – 435
5	Intuitionistic Fuzzy Tree Center-Based Clustering Algorithm	G.Thamizhendhi and R. Parvathi	International Journal of Soft Computing and Engineering B Impact Factor: 5.23 (Year 2017)	2016, 6(1), 50 – 65
6	Chromatic Values of Intuitionistic Fuzzy Directed Hypergraph Colorings	K. K. Myithili and R. Parvathi	International Journal of Soft Computing and Engineering B Impact Factor: 5.23 (Year 2017)	2016, 6(1), 32 – 37
7	Coloring of Intuitionistic Fuzzy Directed Hypergraphs	K. K. Myithili and R. Parvathi	International Journal of Computer Application Universal Impact Factor=0.45	2016, 6(3), 159 – 166
8	Intuitionistic Fuzzy Filters for Noise Removal in Images	C. Radhika, R. Parvathi and N. Karthikeyani Visalakshi	Handbook of Research on Generalized and Hybrid Set Structures and Applications for Soft Computing	2016, 53, 54 – 64
9	Multi-parameter temporal intuitionistic fuzzy sets	R. Parvathi and C. Radhamani	Notes on Intuitionistic Fuzzy Sets (indexed in Directory of Research Journals Indexing (since 2016), EZB (Electronic Journals Library) (since 2016), Index Copernicus (in 2012, for 2015 under evaluation), ROAD – Directory of Open Access Scholarly Resources (since 2015), WorldCat / OCLC (since 2016) and Zentralblatt MATH (since 1995))	2016, 22(1), 35 – 47
10	An application of intuitionistic fuzzy directed hypergraph in molecular structure representation	R.Parvathi, C.Yuvapriya and N.Maragatham	Notes on Intuitionistic Fuzzy Sets (indexed in Directory of Research Journals Indexing (since 2016), EZB (Electronic Journals Library) (since 2016), Index Copernicus (in 2012, for 2015 under evaluation), ROAD – Directory of Open Access Scholarly Resources (since 2015), WorldCat / OCLC (since 2016) and Zentralblatt MATH (since 1995))	2017, 23(1), 69 – 78

11	InterCriteria Analysis of rankings of Indian universities	R. Parvathi, Vassia Atanassova, Lyubka Doukovska, C. Yuvapriya and K. Indhurekha	Notes on Intuitionistic Fuzzy Sets (indexed in Directory of Research Journals Indexing (since 2016), EZB (Electronic Journals Library) (since 2016), Index Copernicus (in 2012, for 2015 under evaluation), ROAD – Directory of Open Access Scholarly Resources (since 2015), WorldCat / OCLC (since 2016) and Zentralblatt MATH (since 1995)	2018, 24(1), 99 – 109
----	---	---	---	--------------------------

### Details of Paper Presentations

S. No.	Date	Title of the Presentation/Poster	Conference/Seminar/ Workshop	Host Institute
<b>Dr.R.Parvathi, Principal Investigator</b>				
1	22.05.2017 & 23.05.2017	An application of IFDHGs in molecular structure representation	21 <sup>st</sup> International Conference on Intuitionistic Fuzzy Sets (ICIFS'2017)	Burgas University "Prof.Assen Zlatarov", Burgas, Bulgaria
2	08.01.2018 to 10.01.2018	InterCriteria Analysis of rankings of Indian universities	International Conference on Intuitionistic fuzzy Sets and Systems (ICIFSS – 2018)	Vellalar College for Women, Erode, Tamilnadu.
<b>Ms.C.Yuvapriya, Project Fellow</b>				
3	17.03.2017 & 18.03.2017	Intersecting Intuitionistic Fuzzy Directed Hypergraphs	International Conference on Applied Mathematics and Informatics (ICAMI 2017)	Kongu Engineering College, Perundurai, Erode, Tamilnadu.
4	02.01.2018 & 03.01.2018	Intuitionistic Fuzzy Directed hypergraph theory in Chemistry	Indian Women and Mathematics - Regional workshop on Research and Opportunities	Cochin University of Science and Technology, Kerala.
5	08.01.2018 to 10.01.2018	Dual Intuitionistic fuzzy directed hypergraph	International Conference on Intuitionistic fuzzy Sets and Systems (ICIFSS – 2018)	Vellalar College for Women, Erode, Tamilnadu.

Principal Investigator : Dr. S.M. Jayasudha  
Department of Business Adms.

#### **PUBLICATION DETAILS**

1. "An empirical study on the dreadful state of Transgender – A study with special reference to Erode city", PARIPEX – Indian Journal of Research, ISSN – 2250-1991, IF: 5.761, IC Value: 79.96, Vol-6, Issue 3, March 2017, Pp 614-616.

2. "Significant issues of Transgender people – An empirical study in Erode district of Tamil Nadu", Imperial Journal of Interdisciplinary Research, ISSN: 2454-1362, Vol-3, Issue-4, 2017, Pp 303-307.

ENCLOSURE -1

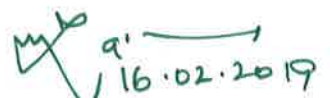
Details of papers publishing in journals

S.No	Name of the journal	Title of the paper	Year	Volume and Issue	Page
1	WORLD JOURNAL OF PHARMACY AND PHARMACEUTICAL SCIENCES	PHYTOCHEMICAL SCREENING OF THE VARIOUS EXTRACTS OF THE PLANT ELAEOCARPUS TUBERCULATUS Roxb	2018	7 Volume Issue 1	1119-1129
2	INTERNATIONAL JOURNAL OF SCIENTIFIC RESEARCH	GC-MS ANALYSIS OF BIOACTIVE COMPOUNDS IN THE PLANT OF METHANOLIC LEAF EXTRACT OF ELAEOCARPUS TUBERCULATUS ROXB.	January-2019	Volume-8 Issue-1	445-459

The papers to be published in the journals will be sent to UGC –SERO as an outcome of this project.

  
PRINCIPAL INVESTIGATOR

**Dr.M.RAJESWARI, M.Sc., M.Phil., Ph.D.,**  
Principal Investigator  
UGC Minor Research Project  
Associate Professor and Head of Botany  
Vellalar College for Women  
ERODE - 638 012. TAMILNADU.

  
PRINCIPAL  
PRINCIPAL  
VELLALAR COLLEGE FOR WOMEN  
(AUTONOMOUS)  
ERODE - 12.



### Details of Publications of Papers in Journals

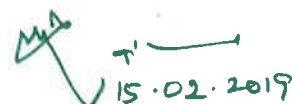
S. No.	Journal Name	Journal Title	Vol. No.	Page No.	Year of Publication	Published by
1.	International Journal of Pharmaceutical Sciences Review and Research	<i>In vitro</i> Antioxidant and Gastroprotective Effect of <i>Cayratia pedata</i> var. <i>Glabra</i> on Ethanol Induced Ulcer Model	51(2)	83-92	August - 2018	Global Research
2.	World Journal of Pharmacy and Pharmaceutical Sciences	<i>In vitro</i> Propagation of <i>Cayratia pedata</i> var. <i>glabra</i> Gamble. with some growth regulators using leaf and stem	8(1)	741-753	December - 2018	Open access

The papers to be published in the journals will be sent to UGC- SERO as an outcome of this project.



**PRINCIPAL INVESTIGATOR**

**Dr.K.KALAIHELVI, M.Sc., M.Phil., Ph.D.,**  
Principal Investigator  
UGC Minor Research Project  
Associate Professor of Botany  
Vellalar College for Women  
ERODE - 626 012. TAMILNADU.



**PRINCIPAL**

PRINCIPAL  
VELLALAR COLLEGE FOR WOMEN  
(AUTONOMOUS)  
ERODE - 12.





ENCLOSURE -1

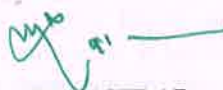
Details of Papers published in Journals

S. No.	Name of the Journal	Title of the Paper	Year	Volume and Issue	ISSN and Page Number
1	International Journal of Advanced Research in Computer Science	De-Noising Mammogram Images by Hybridizing Deviation about Mean, Median and Maximum Filters	2017	Volume 8, No. 3	pp: 1150 – 1154, ISSN : 0976-5697
2	International Journal of Pure and Applied Mathematics (Scopus Indexed)	Region of Non Interest based Medical Image Authentication in Wavelet Domain using Fuzzy Inference System	2017	Special Issue: Volume 114, Issue 11	pp: 199-209, ISSN: 1311-8080
3	International Journal of Engineering and Technology (Scopus Indexed)	Mean Square Error Optimization to Authenticate Multi-Modality Medical Images in Wavelet Domain	August 2018	Vol: 7(3.27)	PP: 265-269, e-ISSN: 0975-4024 (online Version) p-ISSN: 2319-8613 (Print Version)
4	International Journal of Engineering and Technology (Scopus Indexed)	GLCM and GLRM based Feature Extraction Technique in Mammogram Images	April 2018	Volume 7 No. 4	Special Issue 18 ISSN : 2227-524X pp: 266-270

The papers to be published in the journals will be sent to UGC –SERO as an outcome of this project.

  
PRINCIPAL INVESTIGATOR

**Dr. S. K. JAYANTHI**  
PRINCIPAL INVESTIGATOR  
UGC - Minor Research Project  
Associate Professor & Head of Computer Science  
Vellalar College for Women (Autonomous)  
Erode - 638 012.

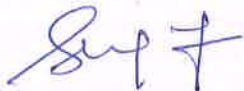
  
PRINCIPAL  
PRINCIPAL  
VELLALAR COLLEGE FOR WOMEN  
(AUTONOMOUS)  
ERODE - 12.

ENCLOSURE-1

Details of Publications of the papers in Journals:

S.No.	Date / Period	Name of the Journal / Book	Title of the paper presented	Details
1	2017	Chapter 11, Advanced Engineering Research and Applications	A virtual scaffold for seclude tenant SaaS data models	ISBN No. 978-93-84443-48-1, Chapter Code #:916-AREA
2	2017	Chapter 65, Volume 507 of the series – advances in intelligent science and computing	Enhanced scaffold design pattern for seclude multi-tenant SaaS application	pp. 671-680, DOI 10.1007/978-981-10-2471-9_65, Springer Singapore 2017

The papers to be published in the journals will be sent to UGC-SERO as an outcome of this project.



Principal Investigator

**Dr. J. SUGUNA**  
PRINCIPAL INVESTIGATOR  
UGC - Minor Research Project  
Associate Professor of Computer Science  
Vellalar College for Women (Autonomous),  
Erode - 638 012.



Principal  
PRINCIPAL  
VELLALAR COLLEGE FOR WOMEN  
(AUTONOMOUS)  
ERODE - 12.

## ENCLOSURE-1

## Details of Publications in International Journals

S.No.	Date	Name of the Journal	Title of the Paper	Volume & Page No.
1.	May 2018	Journal of Advanced Research in Dynamical and Control System ELSEVIER SCOPUS	Normalization Based Intelligent Risk Factor Classification System For Type-2 Diabetic Patients	Volume 10, 05-Special Issue, 518-529
2.	January 2019	International Journal of Recent and Innovation Trends in Computing and Communication	Various Feature Selection Techniques In Type 2 Diabetic Patients For The Prediction Of Cardiovascular Disease	Volume: 7 Issue: 1 17-20

The papers are published in the journals as an outcome of this project.

  
Principal Investigator

**Dr. P. RADHA**  
PRINCIPAL INVESTIGATOR  
UGC - Minor Research Project  
Assistant Professor of Computer Science  
Vellalar College for Women (Autonomous),  
Erode - 638 012.

8. Summary of the Progress made so far under the project (not more than 200 words):

Histochemical localization methods in combination with microscopic imaging techniques are much useful to distinguish useful plant / plant parts from non-useful ones. Hence, a method would be developed to formulate new herbal formulation or drug in pharmaceutical industries. There is a chance of identifying active phytochemical principle for one or more curative properties. If any such compound is/are identified, will be focused towards design and development of new novel and indigenous plant based drugs. All the works have been completed as per the schedule. Hence the progress of this research work goes as per schedule. I assure you that the work will be completed successfully within the stipulated time.

9. Major relevant pictures (colour) of images taken during use of Foldscope (please post only relevant pictures below):

- Workshop pictures : ANNEXURE I
- Pictures of images (Pollen/ microbes/ tissues etc.) observed using foldscope (please post with place, date and time). : ANNEXURE II

10. Any specific new observations made: Yes / No, If yes, details thereof: YES, ANNEXURE III

11. Whether registered under <https://microcosmos.foldscope.com> : Yes.

12. Number of pictures/videos posted on <https://microcosmos.foldscope.com> : Yes.

Name of the Project Investigators

**Dr. G. JAYANTHI**  
Principal Investigator  
DBT - Foldscope Project  
Assistant Professor of Botany  
Vellalar College for Women (Autonomous)  
Erode - 12, Tamilnadu.

Name of the Head of the institution/Principal/Director/Registrar

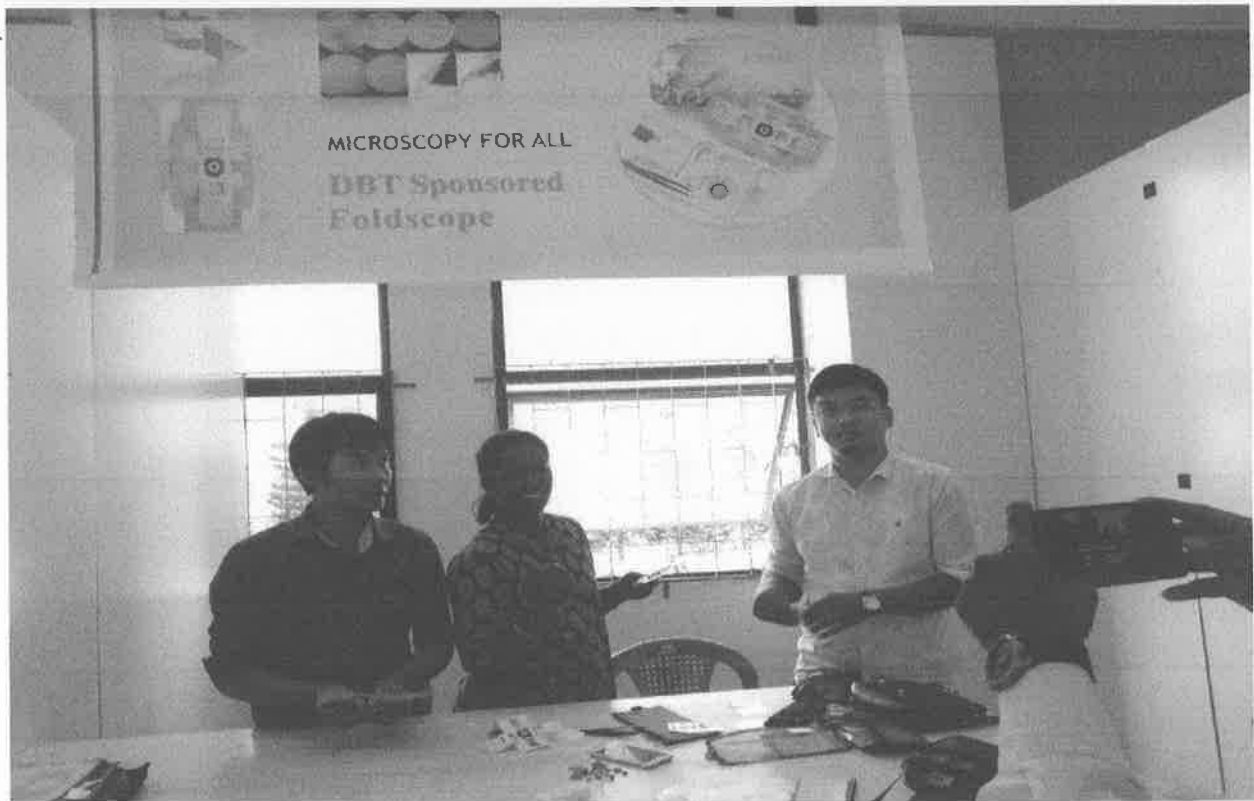
(Signature & Stamp)

PRINCIPAL  
VELLALAR COLLEGE FOR WOMEN  
(AUTONOMOUS)  
ERODE-12.



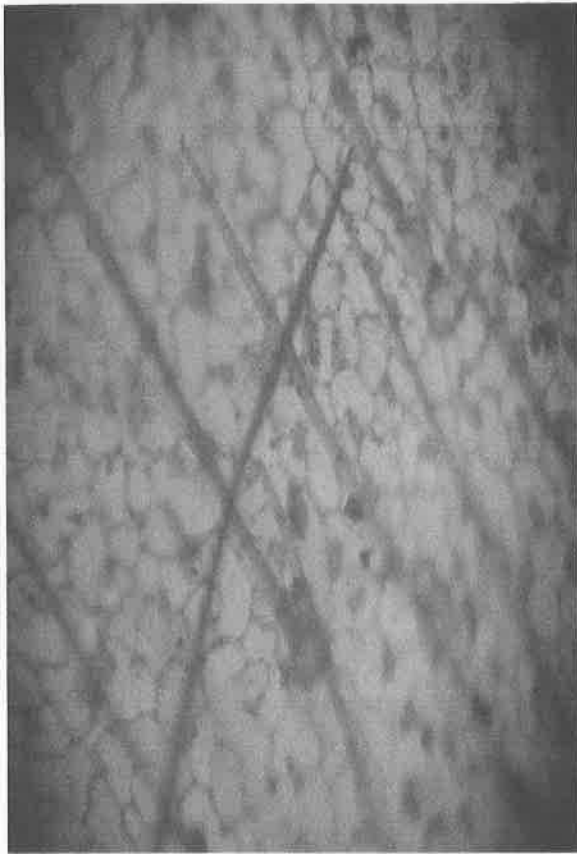
## Annexure I

### Twinning Programme at Mizorum University- Aizwal

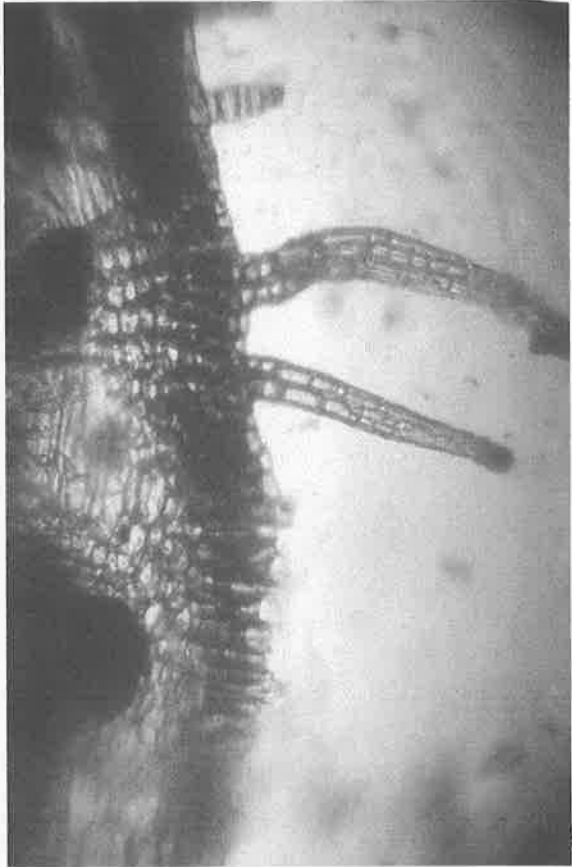




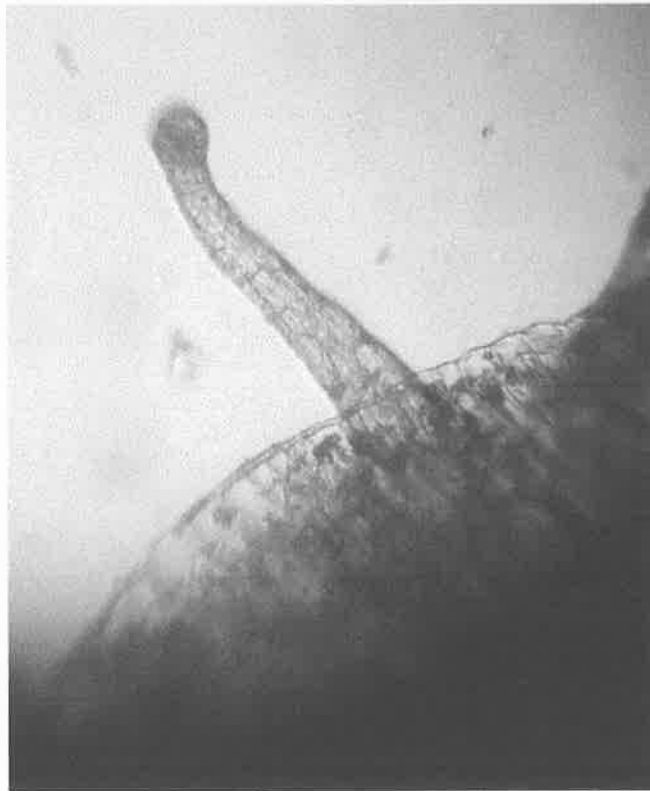
**Annexure III**



a



b



c

a. Uniseriate trichome b. Multiseriate Trichome c. Multiseriate glandular trichome


**Annexure - III**

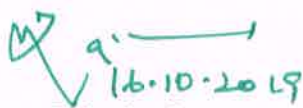
**List of pictures/videos posted on <https://microcosmos.foldscope.com>**

S.No.	DATE	USER NAME	ID - STICKER NO.	TITLE
1.	5.6.2018	Dr. S. Sharmila	0002D5F1A74E	Morphoanatomical characters of medicinal plants in Manar region
2.	5.6.2018	Dr. S. Sharmila	0002D5F1A74E	Litter study in Manar hill range
3.	12.6.2018	Dr. S. Sharmila	0002D5F1A74E	One day DBT funded skill development workshop on foldscope assembly and its usage
4.	9.7.2018	E.K. Ramya	0002D5F1A74E	Isolation of litter decomposing microorganisms in Manar hill range – The Western Ghats
5.	23.7.2018	S.Mownika	0002BF1DCFDE	Specific focus on histological characterization – Medicinal plants in Manar range
6.	13.8.2018	S.Mownika	0002BF1DCFDE	Recent approach to view stomatal anatomy under foldscope
7.	11.09.2018	Dr. S. Sharmila	0002D5F1A74E	<i>Rauvolfia serpentine</i> and <i>Acacia caesia</i> anatomical view under foldscope
8.	17.09.2018	M. Anusha	00023DC2FFB3	Workshop on “Foldscope assembly and usage for UG students”
9.	11.10.2018	Yuvarajeswaran	00020ACCD823	Foldscope vision of <i>Passiflora foetida L.</i> - a protocarnivorous plant in Manar region, Western Ghats, Tamil Nadu
10.	17.10.2018	Rosekavin	0002227BD7A4	One Day Foldscope Training Programme In Government Boys Higher Secondary School, Manickampalayam, Erode, Tamilnadu
11.	10.11.2018	Sudhakar	00025057C6B6	Outcome of Foldscope Workshop - Government Higher Secondary School, Vijayamangalam, Erode District, Tamil Nadu
12.	27.11.2018	Dr. S. Sharmila	0002D5F1A74E	Northeast collaborative Training Workshop on Foldscope
13.	21.01.2019	Dr. S. Sharmila	0002D5F1A74E	Workshop on Foldscope - Applications of Foldscope in Bioscience
14.	23.01.2019	Dhivyamani	000238AAE022	Foldscope anatomical view of <i>Solanum trilobatum</i> and <i>Mukia maderaspatana</i>
15.	11.03.2019	Vinovinothini	00020596A8BC	Pollen grains under Foldscope



16.	12.03.2019	Dr. S. Sharmila	0002D5F1A74E	Workshop on Foldscope - "Tools To Revitalize Research and Teaching"
17.	03.05.2019	Kirithiga Mythrayi	0002D91127E6	A Collaborative and Innovative Foldscope Workshop in Erode
18.	12.07.2019	Dr. S. Sharmila	0002D5F1A74E	Introducing foldscope tool to tribal community (Irulas) – Manar beat, Karamadai, Coimbatore District
19.	01.10.2019	E.K. Ramya	0002D5F1A74E	One day foldscope hands on training in Nandha Arts and Science College, Erode, Tamilnadu
20.	08.10.2019	S.Mownika	0002BF1DCFDE	Demonstration of Foldscope tool in Bharathiar University, Coimbatore, Tamilnadu

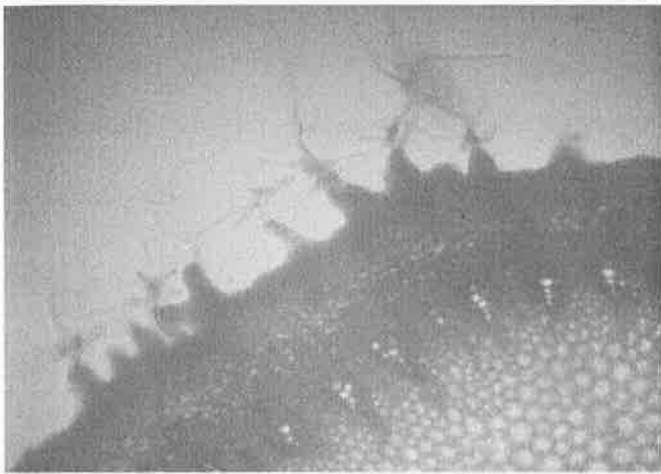
  
 Signature of the Principal Investigator  
**Dr.S. SHARMILA M.Sc., M.Phil., Ph.D.**  
 Principal Investigator  
 DBT - FOLDSCOPE PROJECT  
 Department of Botany  
 Vellalar College for Women,  
 Erode - 638 012.

  
 Principal  
 PRINCIPAL  
 VELLALAR COLLEGE FOR WOMEN  
 (AUTONOMOUS)  
 ERODE - 12.

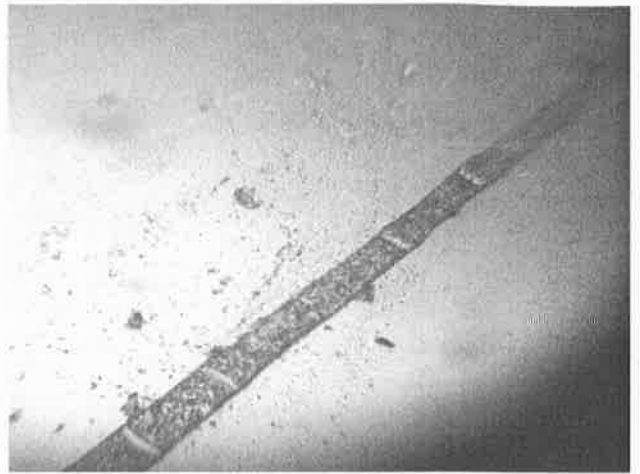
## FOLDSCOPE PICTURES

MAJOR RELEVANT PICTURES (COLOUR) OF IMAGES TAKEN DURING USE  
OF FOLDSCOPE

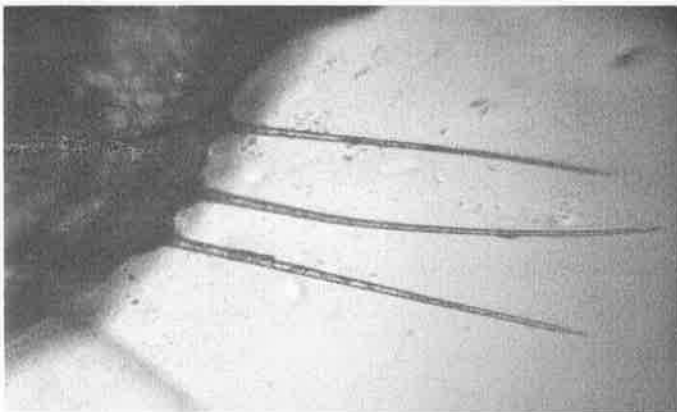
### TRICHOME DISTRIBUTION



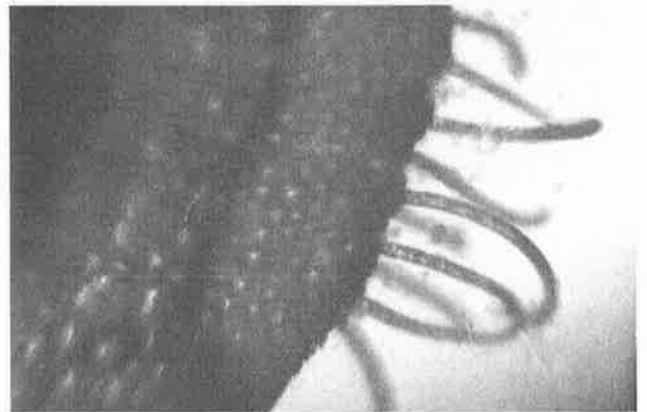
*Capparis grandiflora* Wall. ex Hook.f. & Thomson.



*Euphorbia hirta* L.

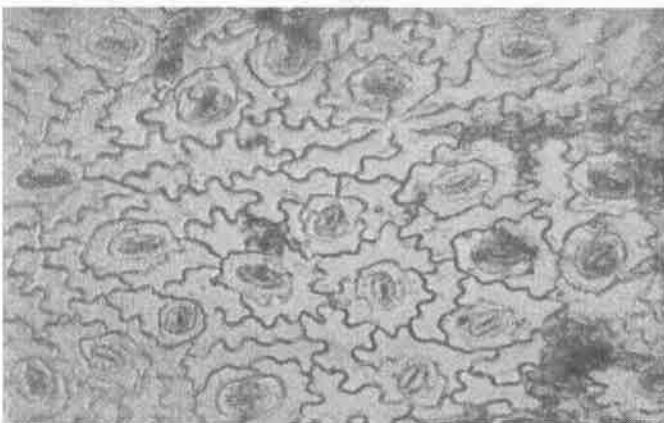


*Passiflora foetida* L.

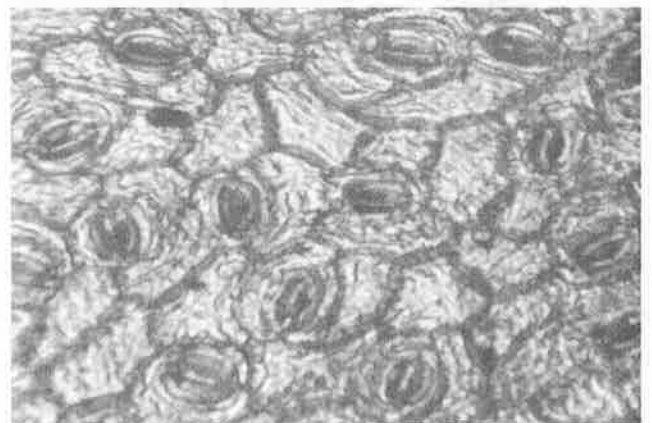


*Acalypha indica* L.

### STOMATAL MORPHOLOGY

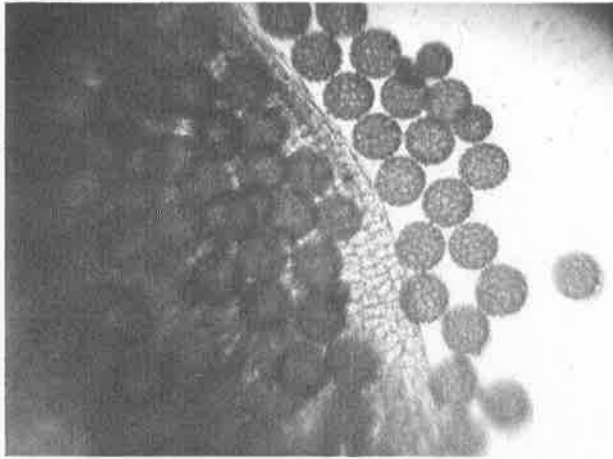


Diacytic stomata in *Adathoda vasica* Nees.

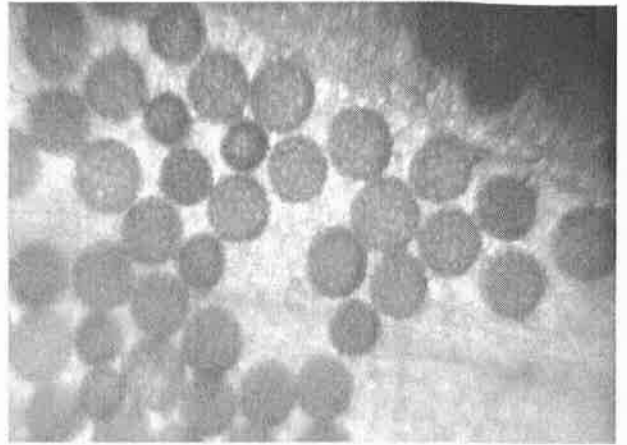


Paracytic stomata in *Ixora coccinea* L.

**POLLEN MORPHOLOGY**



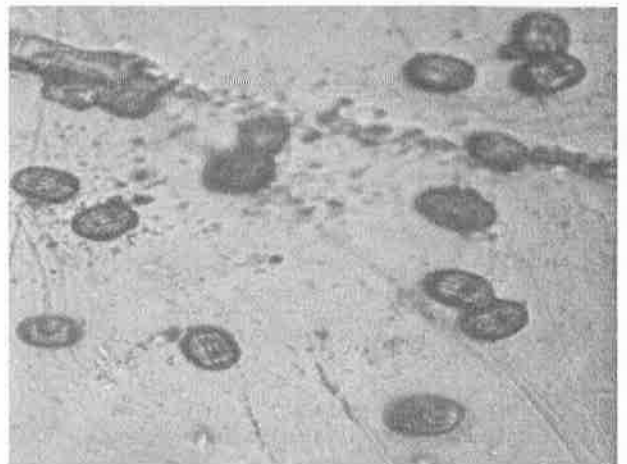
**Unstained pollen of *Tribulus terrestris* L.**



**Stained pollen of *Tribulus terrestris* L.**



***Adhatoda vasica* Nees.**



***Tecoma stans* L.**

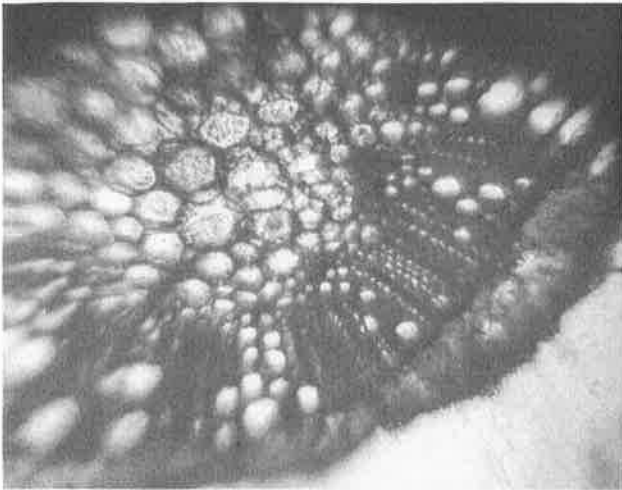
**STEM AND LEAF ANATOMY**



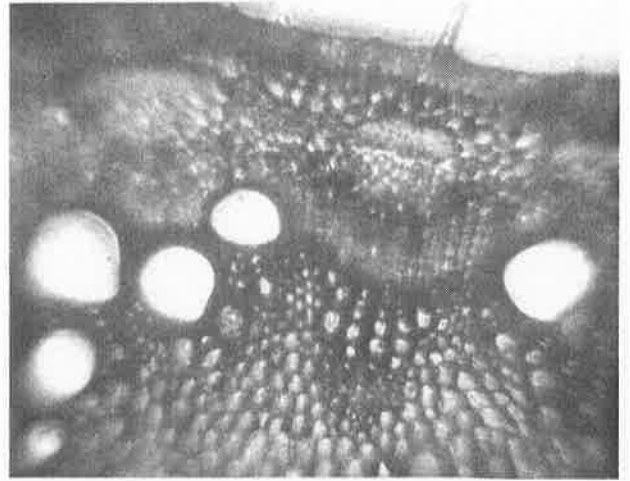
***Acalypha indica* L. stem**



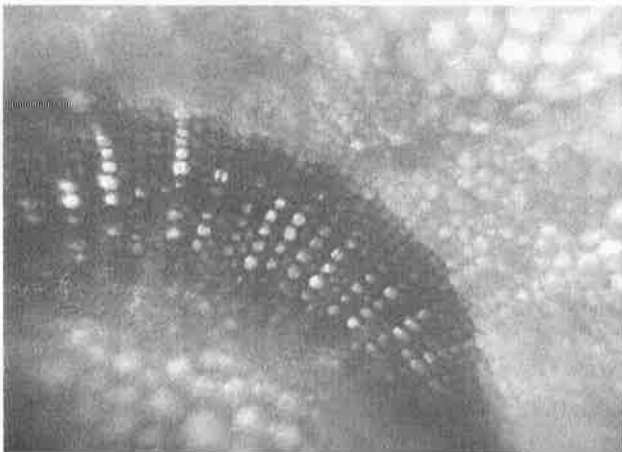
***Adhatoda vasica* Nees. stem**



*Tribulus terrestris* L. stem



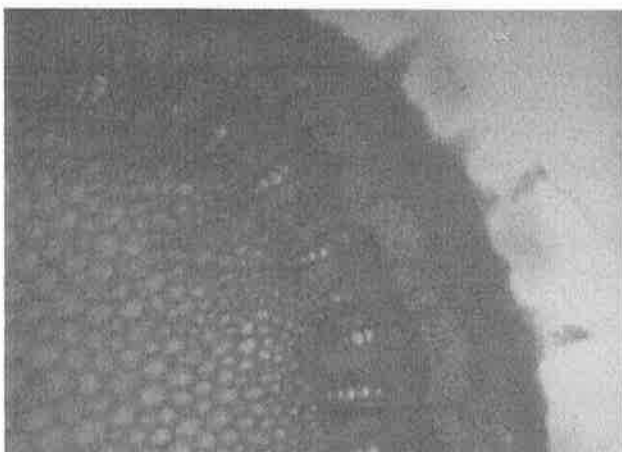
*Passiflora foetida* L. Stem



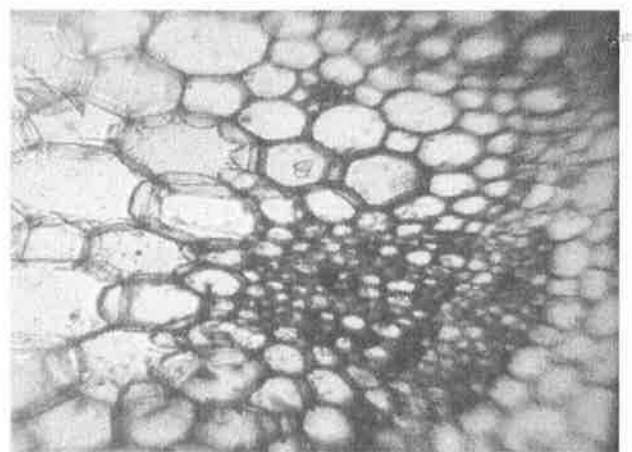
*Catharanthus roseus* (L.) G. Don stem



Wedge shaped Vascular bundle in *Nerium odorum* L. leaf

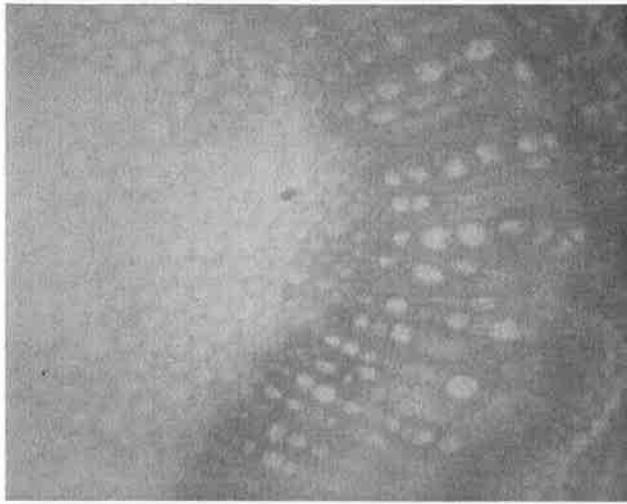


*Capparis grandiflora* Wall. ex Hook. f. & Thomson. stem

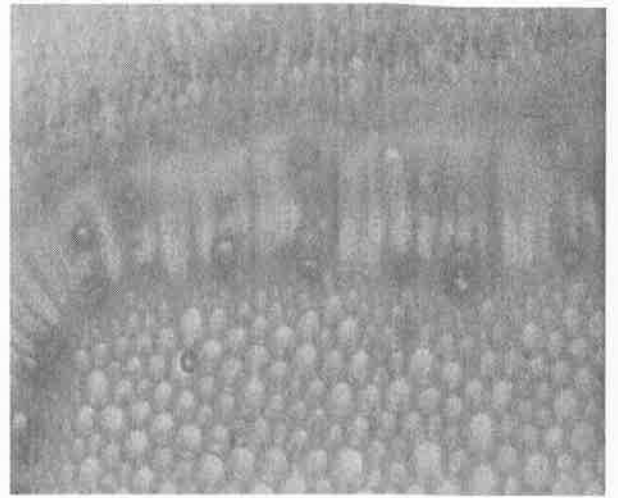


*Tridax procumbens* L. stem

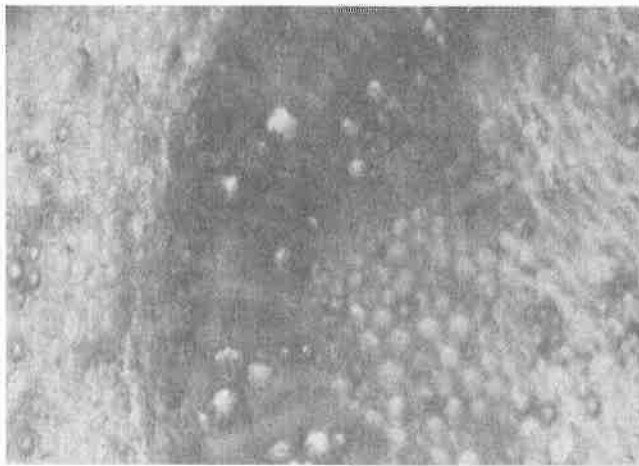
**HISTOCHEMICAL LOCALIZATION IN *MORINDA CITRIFOLIA* L.**



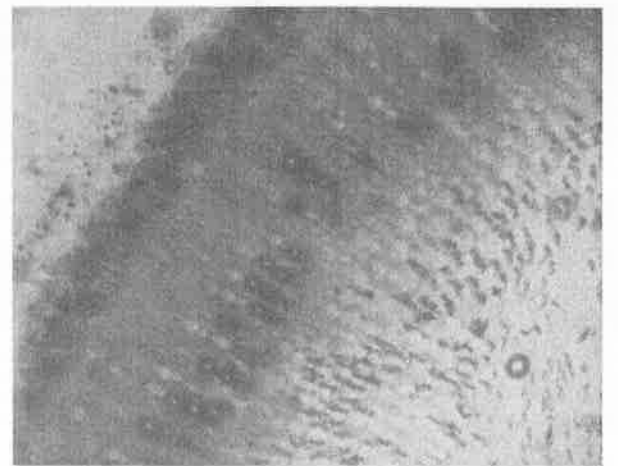
**Carbohydrate Test – Pink Colour**



**Protein Test – Blue Colour**

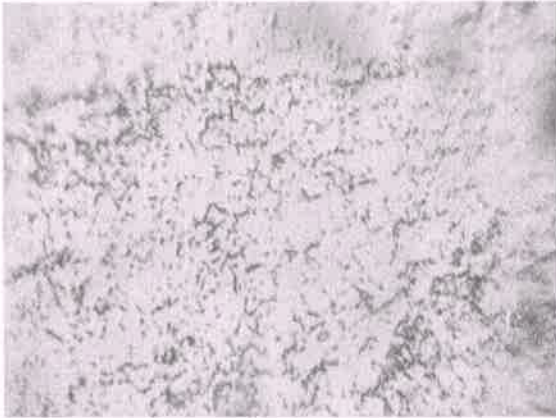


**Flavonoid Test – Yellow Colour**



**Tannin Test – Dark blue Colour**

**MICROBES**



**Gram Positive Rod shaped Bacteria**



**Gram Negative Rod shaped Bacteria**

*S. Sharmila*  
Signature of the Principal Investigator  
**Dr.S. SHARMILA M.Sc., M.Phil., Ph.D.**  
Principal Investigator  
DBT - FOLDSCOPE PROJECT  
Department of Botany  
Vellalar College for Women,  
Erode - 638 012.

*[Signature]*  
16.10.2019  
**Principal**  
**PRINCIPAL**  
VELLALAR COLLEGE FOR WOMEN  
(AUTONOMOUS)  
ERODE - 12.

## OUTCOME OF THE PROJECT

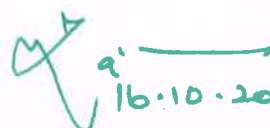
1. Above **three hundred and fifty** members learned about foldscope assembly and its usage.
2. **School students** of various levels (**120**) have analyzed the plant and microbial samples on their own.
3. The **College students** among various disciplines (**256**) of our college were benefited by participating in foldscope workshop.
4. In our college research committee organize a workshop and invited me to deliver a talk about “**Tools to revitalize research and teaching**”. In connection with this programme I have delivered a lecture about **a paper based origami microscope – Foldscope**. All the faculty members & Research scholars of various disciplines were utilized and enrich their knowledge.
5. As the Principal Investigator, I assure that the foldscope was very much useful for anatomical and histochemical localization of certain endemic and ethnic medicinal plants. And also it is much useful for screening of litter decomposing microorganisms. It might helpful for their research work.
6. Lab assistants of our college were gained knowledge about foldscope and its usage.
7. Foldscope facilitate the post graduate students for anatomical observation and histochemical localization of important medicinal plant specimens.
8. **Northeast Collaboration** with Mizoram University, Aizawl and presented a paper about assembly and usage of Foldscope.
9. **Organized a Foldscope Collaboration workshop** with Erode diagnostic laboratory.
10. Introducing foldscope tool to **Tribal communities** (Irulas) in our study area.
11. Demonstrate a Foldscope hands on training in **Nandha arts and Science College**, Koorapalayam, Erode, Tamil Nadu.
12. Handling and usage of Foldscope methodology were explained in **Bharathiar University**, Coimbatore, Tamil Nadu.

13. **Two research articles were accepted for publication by adopting this foldscope in International Journal of current Pharmaceutical Research and Medicinal and Aromatic plants that adds the quality of the project.**

As a whole it was very much useful for the students and teaching faculty.

  
Signature of the Principal Investigator

**Dr.S. SHARMILA M.Sc., M.Phil., Ph.D..**  
Principal Investigator  
DBT . FOLDSCOPE PROJECT  
Department of Botany  
Vellalar College for Women,  
Erode - 638 012.

  
16.10.2018

**Principal**  
**PRINCIPAL**  
**VELLALAR COLLEGE FOR WOMEN**  
**(AUTONOMOUS)**  
**ERODE - 12.**